

Monthly Report on Short-term Transactions of Electricity in India

August 2022



Economics Division
Central Electricity Regulatory Commission
36, Janpath, Chanderlok Building



Contents

S.No.	Contents	Page No
	Contents	i
	List of Tables	ii
	List of Figures	iii
	Abbreviations	iv
1	Introduction	1
2	Volume of Short-term Transactions of Electricity	1
3	Price of Short-term Transactions of Electricity	3
3.1	<i>Price of electricity transacted through Traders</i>	3
3.2	<i>Price of electricity transacted through Power Exchanges</i>	3
3.3	<i>Price of electricity transacted through DSM</i>	4
4	Trading Margin	4
5	Volume of Short-term Transactions of Electricity (Regional Entity-wise)	4
6	Congestion on Inter-State Transmission Corridor for Day-Ahead Market and Real Time Market on Power Exchanges	5
7	Volume and Price of Renewable Energy Certificates (RECs)	6
8	Inferences	7

S.No.	List of Tables	Page No.
Table-1	Volume of Short-term Transactions of Electricity in India	9
Table-2	Percentage Share of Electricity Transacted by Trading Licensees	11
Table-3	Price of Electricity Transacted through Traders	12
Table-4	Price of Electricity Transacted through Traders (Time-wise)	12
Table-5	Price of Electricity Transacted in Day Ahead Market through Power Exchanges	12
Table-6	Price of Electricity Transacted in Green Day Ahead Market through Power Exchanges	12
Table-7	Price of Electricity Transacted in Real Time Market through Power Exchanges	12
Table-8	Volume and Price of Electricity in Term Ahead Market of IEX	13
Table-9	Volume and Price of Electricity in Term Ahead Market of PXIL	13
Table-10	Volume and Price of Electricity in Term Ahead Market of HPX	13
Table-11	Volume and Price of Electricity in Green Term Ahead Market of IEX	13
Table-12	Volume and Price of Electricity in Green Term Ahead Market of PXIL	13
Table-13	Price of Electricity Transacted through DSM	13
Table-14	Volume of Electricity Sold through Bilateral	15
Table-15	Volume of Electricity Purchased through Bilateral	17
Table-16	Volume of Electricity Sold in Day Ahead Market through Power Exchanges	18
Table-17	Volume of Electricity Purchased in Day Ahead Market through Power Exchanges	20
Table-18	Volume of Electricity Sold in Green Day Ahead Market through Power Exchanges	21
Table-19	Volume of Electricity Purchased in Green Day Ahead Market through Power Exchanges	22
Table-20	Volume of Electricity Sold in Real Time Market through Power Exchanges	23
Table-21	Volume of Electricity Purchased in Real Time Market through Power Exchanges	25
Table-22	Volume of Electricity Under drawal through DSM	26
Table-23	Volume of Electricity Over drawal through DSM	29
Table-24	Total Volume of Net Short-term Transactions of Electricity (Regional Entity-wise)	32
Table-25	Details of Congestion in Power Exchanges	36
Table-26	Volume of Short-term Transactions of Electricity in India (Day-wise)	37
Table-27(a)	Price of Day Ahead Transactions of Electricity (Day-Wise)	38
Table-27(b)	Price of Green Day Ahead Transactions of Electricity (Day-Wise)	39
Table-27(c)	Price of Real Time Transactions and DSM (Day-Wise)	40
Table-28	Volume of Short-term Transactions of Electricity (Regional Entity-wise)	41
Table-29	Volume and Price of Renewable Energy Certificates (RECs) Transacted through Power Exchanges	45
Table-30	Volume and Price of Cross Border Trade through Day Ahead Market at IEX	45

S. No.	List of Figures	Page No.
Figure-1	Volume of various kinds of Electricity Transactions in Total Electricity Generation	9
Figure-2	Volume of Short-term Transactions of Electricity	9
Figure-3	Volume transacted in different markets segments on Power Exchanges	10
Figure-4	Volume of Short-term Transactions of Electricity (Day-wise)	10
Figure-5	Percentage Share of Electricity Transacted by Trading Licensees	11
Figure-6	Weighted Average Price of Short-term Transactions Electricity	14
Figure-7	Weighted Average Price of Short-term Transactions Electricity (Day-wise)	14

Abbreviations

Abbreviation	Expanded Version
ABSP_ANTP	Acme Bhiwadi Solar Power Private Limited, Anantpur
ACBIL	ACB (India) Limited
ACP	Area Clearing Price
ACV	Area Clearing Volume
ACME_SLR	ACME Solar Power Project
ACME_RUMS	Acme Rewa Ultra Mega Solar Project
ADANI GREEN	Adani Green Energy Limited
ADANIHB_SLR	Adani Hybrid Energy Jaisalmer One Limited (Solar)
ADANI_SLR 4	Adani Solar Energy Four Private Limited
ADANIHB_WIND	Adani Hybrid Energy Jaisalmer One Limited (Wind)
ADY1_PVGD	Adyah Solar Energy Pvt Ltd., Block 1 Pavagada Solar Park
ADY2_PVGD	Adyah Solar Energy Pvt Ltd., Block 2 Pavagada Solar Park
ADY3_PVGD	Adyah Solar Energy Pvt Ltd., Block 3 Pavagada Solar Park
ADY6_PVGD	Adyah Solar Energy Pvt Ltd., Block 6 Pavagada Solar Park
ADY10_PVGD	Adyah Solar Energy Pvt Ltd., Block 10 Pavagada Solar Park
ADY13_PVGD	Adyah Solar Energy Pvt Ltd., Block 13 Pavagada Solar Park
AGEMPL BHUJ	Adani Green Energy (MP) Ltd., Bhuj
AHEJOL_S_FTG2	Adani Hybrid Energy Jaisalmer One Limited (SOLAR)
AHEJOL_W_FTG2	Adani Hybrid Energy Jaisalmer One Limited (WIND)
AHEJ2L_SOLAR	Adani Hybrid Energy Jaisalmer Two Limited (Solar)
AHEJ3L_SOLAR	Adani Hybrid Energy Jaisalmer Three Limited (Solar)
AHEJ4L_SOLAR	Adani Hybrid Energy Jaisalmer Four Limited-Hybrid Solar
AHEJ4L_WIND	Adani Hybrid Energy Jaisalmer Four Limited-Hybrid Wind
AHSP_ANTP	Acme Hisar Solar Power Private Limited, Anantpur
AKS_PVGD	ACME Kurukshetra Solar Energy Pvt. Ltd
AKSP_ANTP	Acme Karnal Solar Power Private Limited, Anantpur
ALFANAR_BHUJ	Alfanar Group Wind Project, Bhuj, Gujarat
AMPS Hazira	Arcelor Mittal Nippon Steel, Hazira
APTEL	Appellate Tribunal for Electricity
ARERJL_SLR	Adani Renewable Energy Park Rajasthan Ltd.
ARINSUM_RUMS	Solenergi Rewa Ultra Mega Solar Project
ARS_PVGD	ACME REWARI Solar Power Pvt Ltd.
ASEJTL_SLR	Adani Solar Energy Jodhpur Two Ltd.
AVAADA1_PVGD	Avaada Solar Energy Private Ltd., Pavagada Project 1
AVAADA2_PVGD	Avaada Solar Energy Private Ltd., Pavagada Project 2
AVADARJHN_SLR	Avaada Rjhn Private Limited_Solar
AYANA_NPKUNTA	Ayana Power, NP Kunta
AZURE_ANTP	Azure Power, Anantpur
AZURE_PVGD	Azure Power, Pavagada
AZURE_SLR	Azure Power Solar Power Project
AZURE34_SLR	Azure Power 34 Pvt. Ltd. Solar Power Project
AZURE43_SLR	Azure Power Forty Three Private Limited
BALCO	Bharat Aluminum Company Limited
BARC	Bhabha Atomic Research Centre
BBMB	Bhakra Beas Management Board
BETAM_TCN	Betam Wind Energy Private Limited, Tuticorin
BHADRAVATHI HVDC	Bhadravathi High Voltage Direct Current Link
BRBCL	Bhartiya Rail Bijlee Company Limited
CEA	Central Electricity Authority
CERC	Central Electricity Regulatory Commission
CGPL	Coastal Gujarat Power Limited
CHUKHA HEP	Chhukha Hydroelectric Project, Bhutan

CHUZACHEN HEP	ChuzachenHydro Electric Power Project
CLEAN_SLR	Clean Solar Power Pvt. Ltd
CLEANSPL_SLR	Clean Solar Jodhpur Pvt Ltd
COASTGEN	Coastal Energen Private Limited
DAGACHU	Dagachhu Hydro Power Corporation
DAM	Day Ahead Market
DB POWER	Diligent Power Pvt. Ltd.
DCPP	Donga Mahua Captive Power Plant
DD&DNH	Daman and Diu & Dadar Nagar Haveli
DGEN MEGA POWER	DGEN Mega Power Project
DGPCL Bhutan	Druk Green Power Corporation Ltd., Bhutan
DHARIWAL POWER	Dhariwal Power Station
DIKCHU HEP	Dikchu Hydro-electric Project, Sikkim
DOYANG HEP	DoyangHydro Electric Project
DSM	Deviation Settlement Mechanism
DVC	Damodar Valley Corporation
EDEN_SLR	Eden RE Cite Private limited
EMCO	EMCO Energy Limited
ESPL_RADHANESDA	Electro Solaire Private Limited, Radhanesda
ESSAR POWER	Essar Power Limited
ESSAR STEEL	Essar Steel Ltd
FORTUM1_PVGD	Fortum Finnsurya Energy Private Ltd, Pavagada Project 1
FORTUM2_PVGD	Fortum Finnsurya Energy Private Ltd, Pavagada Project 2
FRV_ANTP	Fotowatio Renewable Ventures, Anantapur
FRV_NPK	Fotowatio Renewable Ventures, NP Kunta
GIPCL_RADHANESDA	Gujarat Industries Power Company Ltd, Radhanesda
GIWEL_BHUJ	Green infra wind energy Limited, Bhuj
GIWEL_TCN	Green Infra Wind Energy Limited,Tuticorin
GMR CHHATTISGARH	GMR Chhattisgarh Energy Limited
GMR KAMALANGA	GMR Kamalanga Energy Ltd.
G-DAM	Green Day Ahead Market
G-TAM	Green Term Ahead Market
HPX	Hindustan Power Exchange Limited
HVDC ALPD	AlipurduarHigh Voltage Direct Current Link
HVDC CHAMPA	Champa-Kurukshetra High Voltage Direct Current Link
HVDC PUS	PasauliHigh Voltage Direct Current Link
HVDC RAIGARH	Raigarh-Pugalur High Voltage Direct Current Link
IEX	Indian Energy Exchange Limited
IGSTPS	Indira Gandhi Super Thermal Power Station Jhajjar
IL&FS	Infrastructure Leasing & Financial Services Limited
INOX_BHUJ	INOX Wind Limited, Bhuj, Gujarat
J&K	Jammu & Kashmir
JAYPEE NIGRIE	Jaypee Nigrie Super Thermal Power Project
JHABUA POWER MP	Jhabua Thermal Power Project
JINDAL POWER	Jindal Power Limited
JINDAL STAGE-II	Jindal Power Ltd Stage II
JITPL	Jindal India Thermal Power Ltd.
JORETHANG	Jorethang Loop Hydroelectric Power Project
KAPP 3&4	Kakrapar Atomic Power Station Unit 3 & 4
KARCHAM WANGTOO	Karcham Wangtoo H.E. Project
KORBA WEST POWER	Korba West Power Company Limited
KOTESHWAR	Koteshwar Hydro Power project
KREDL_PVGD	Karnataka Renewable Energy Development Ltd,Pavagada
KSK MAHANADI	KSK Mahanadi Power Ltd

KSMPL_SLR	Kilaj Solar (Maharashtra) Private Limited
KURICHU HEP	Kurichhu Hydro-electric Power Station, Bhutan
LANKO_AMK	LancoAmarkantak Power Private Limited
LANKO BUDHIL	LancoBudhil Hydro Power Private Limited
LANKOKONDAPALLY	Lanco Kondapally Power Private Limited
LOKTAK	Loktak Power Project
MAHINDRA_RUMS	Mahindra Rewa Ultra Mega Solar Project
MAHOBASLR	Mahoba Solar Power Project
MALANA	Malana Hydroelectric Plant
MANGDECHU HEP	Mangdechhu Hydroelectric Project, Mangdechhu River, Bhutan
Maruti Coal	Maruti Clean Coal and Power Limited
MB POWER	MB Power Ltd
MEENAKSHI	Meenakshi Energy Private Limited
MP	Madhya Pradesh
MRPL	Mahindra Renewables Private Limited
MTPS II	Muzaffarpur Thermal Power Station – Stage II
MYTRAH_TCN	Mytrah Energy (India) Private Limited, Tuticorin
MU	Million Units
NAPP	Narora Atomic Power Plant
NCR ALLAHABAD	North Central Railway, Allahabad
NEEPCO	North Eastern Electric Power Corporation Limited
NEP	Nepal
NFL	National Fertilisers Limited
NHPC STATIONS	National Hydro Electric Power Corporation Ltd. Stations
NJPC	Nathpa Jhakri Hydroelectric Power Station
NLC	Neyveli Lignite Corporation Limited
NLDC	National Load Dispatch Centre
NPGC	Nabinagar Power Generating Company (Pvt.) Limited
NSPCL	NTPC - SAIL Power Company Private Limited
NTECLVallur	NTPC Tamil Nadu Energy Company Limited Vallur
NTPC_ANTP	NTPC Anantapur
NTPC STATIONS	National Thermal Power Corporation Ltd. Stations
NTPL	NLC Tamil Nadu Power Limited
NVVN	NTPC Vidyut Vyapar Nigam Limited
ONGC Platana	ONGC Tripura Power Company
OPGC	Odisha Power Generation Corporation
ORANGE_TCN	Orange Renewable Power Pvt. Ltd, Tuticorin
OSTRO	Ostro Energy Private Limited
OTC	Over The Counter
PARAM_PVGD	Parampujya Solar Energy Private Ltd
PARE HEP	Pare hydroelectric project, Arunachal Pradesh
PX	Power Exchange
PXIL	Power Exchange India Limited
RAIL	Indian Railways
RAMPUR HEP	Rampur Hydro Electric Power Project
RANGIT HEP	Rangit Hydroelectric power project
RANGANADI HEP	Ranganadi Hydro Electric Power Project, Arunachal Pradesh
RAP-B	Rajasthan Atomic Power Plant-B
RAP-C	Rajasthan Atomic Power Plant-C
REC	Renewable Energy Certificate
REGL	Raigarh Energy Generation Limited
RENEW_BHACHAU	ReNew Power Limited, Bhachau
RENEW_BHUJ	ReNew Power Limited, Bhuj
RENEW_PVGD	ReNew Wind Energy (TN2) Private Limited

RENEW_SLR_BKN	Renew Solar Bikaner
RENEWJH_SLR	Renew Solar Energy (Jharkhand Three) Private Limited
RENEWURJA_SLR	ReNew Solar Urja Private Limited
RGPPL_IR	Ratnagiri Gas and Power Private Ltd., supply to Indian Railways
RGPPL_OTHER	Ratnagiri Gas and Power Private Limited
RLDC	Regional Load Dispatch Centre
RONGNICHU HEP	Rongnichu Hydro Electric Power Project
RPREL	Raipur Energen Limited
RSTPS_FSPP	NTPC Ramagundam STPS- Floating Solar PV Project
RTC	Round The Clock
RTM	Real Time Market
SasanUMPP	Sasan Ultra Mega Power Project
SB_SLR	Soft Bank Solar
SB6_POKARAN	SB Energy Six Private Limited, Pokaran
SBG_CLEANTECH_SLR	SBG Cleantech Ltd
SBG_NPK	SB Energy Solar Private Limited, NP Kunta
SBG_PVGD	SB Energy Solar Private Limited, Pavagada
SBSR_SLR	SBSR Power Cleantech Eleven Private Limited
SEMBCORP	Sembcorp Gayatri Power Ltd
SIMHAPURI	Simhapuri Energy Private Limited
SKS Power	SKS Power Generation Chhattisgarh Limited
SESPL	Srijan Energy Systems Pvt. Ltd.
SINGOLI BHATWARI HEP	Singoli-Bhatwari Hydroelectric Project, Uttarakhand
SKRPL	Sitac Kabini Renewables Pvt. Ltd.
SPRNG_NPKUNTA	Sprng Energy, NP Kunta
SPRING_PUGALUR	Spring Solar Power Private Limited, Pugalur
TALA HEP	Tala Hydroelectric Project, Bhutan
TASHIDENG HEP	Tashiding Hydro Electric Project, Sikkim
TATA_ANTP	TATA Power Anantapur
TATA_PVGD	Tata Power Renewable Energy Ltd
TATA_SLR	Tata Solar
TEESTA STG3	Teesta Stage 3 Hydro Power Project
TEHRI	Tehri Hydro Electric Power Project
TAM	Term Ahead Market
THAR1_SLR	Thar Surya Ravi One Pvt Ltd
THERMAL POWERTECH	Thermal Powertech Corporation India Limited
TPREL_RADHANESDA	Tata Power Renewable Energy Limited, Radhanesda
VINDHYACHAL HVDC	Vindhyachal High Voltage Direct Current Link
YARROW_PVGD	Yarrow Infra Structure Private Ltd

1. Introduction

1.1. A well-functioning electricity market requires an effective market monitoring process. The monthly report on short-term transactions of electricity, published by CERC since 2008 as part of its market monitoring process, provides a snapshot of key aspects of short-term transactions of electricity in India. Here, “short-term transactions of electricity” refers to the contracts of less than one year period, for electricity transacted (inter-State) through inter-State Trading Licensees and directly by the Distribution Licensees, Power Exchanges (Indian Energy Exchange Ltd (IEX), Power Exchange India Ltd (PXIL) and Hindustan Power Exchange Ltd (HPX)), and Deviation Settlement Mechanism (DSM). The main objectives of the report are: (i) to analyze the volume and price of the short-term transactions of electricity; (ii) to assess the competition among the market players; (iii) to analyse the effect of congestion on volume of electricity transacted through power exchanges; (iv) to provide information on volume and price of Renewable Energy Certificates (RECs) transacted through power exchanges; and (v) to disseminate all other relevant market information. The analysis of short-term transactions of electricity during the month of **August 2022** is presented in the following sections.

2. Volume of Short-term Transactions of Electricity

2.1. During August 2022, total electricity generation, excluding generation from renewable and captive power plants in India was 121489.62 MU (Table-1). Of the total electricity generation, 13.75% was transacted through short-term, comprising of 6.47% through bilateral (through traders and term-ahead contracts on power exchanges, and directly between distribution companies), followed by 5.04% through power exchanges {Day Ahead Market (DAM) (including G-DAM) and Real Time Market (RTM)} and 2.23% through DSM (Table-1 & Figure-1).

2.2. Of the total short-term transactions (16702.18 MU), 47.08% was transacted through bilateral (28.86% through traders and term-ahead contracts on power exchanges, and 18.21% directly between distribution companies), followed by 36.67% through power exchanges {DAM (including G-DAM) and RTM} and 16.25% through DSM (Table-1 & Figure-2). Daily volume of short-term transactions is shown in Table-26 & Figure-4.

2.3. Of the total volume of electricity transacted through power exchanges, 49.66% of the volume was transacted in DAM (including G-DAM), followed by 29.15% in RTM and 21.19% in Term Ahead Market (TAM) (including G-TAM) (Figure-3).

2.4. The share of electricity traded by each trading licensee is given in Table-2 & Figure-5. The volume of electricity transacted by the trading licensees includes bilateral transactions and the transactions undertaken through power exchanges. There were 46 trading licensees as of August 2022. Of which, 28 trading licensees were engaged in short-term trading. The top 5 trading licensees, namely PTC India Ltd., NTPC Vidyut Vyapar Nigam Ltd., Tata Power Trading Company (P) Ltd., Manikaran Power Ltd. and Adani Enterprises Ltd. had a share of 80.42% in the total volume of electricity traded by all the licensees.

2.5. Herfindahl-Hirschman Index (HHI), a commonly accepted index to calculate market concentration, has been used for measuring the competition among the trading licensees. Increase in the HHI generally indicates decrease in competition and increase of market concentration, and vice versa. The HHI below 0.15 indicates non-concentration, HHI between 0.15 and 0.25 indicates moderate concentration and HHI above 0.25 indicates high concentration. The HHI has been computed based on the volume of electricity traded (inter-State & intra-State) by inter-State trading licensees, and it was 0.1917 for the month of August 2022, which indicates moderate concentration of market power (Table-2).

2.6. The volume of electricity transacted in the DAM of IEX and PXIL was 3528.70 MU, and 10.12 MU respectively. The volume of total buy bids and sell bids was 5790.66 MU and 7199.82 MU respectively in IEX, while the same was 61.35 MU and 191.50 MU respectively in PXIL. No electricity was transacted through DAM of HPX.

2.7. Of the total volume of electricity transacted in the DAM of IEX, volume sold by the neighboring countries of India was 239.12 MU and the volume purchased was 10.57 MU, under the Cross Border Trade of electricity through power exchange (Table-30). No Cross Border transaction of electricity was undertaken through PXIL and HPX.

2.8. The volume of electricity transacted in the G-DAM of IEX was 320.50 MU, while no electricity was transacted in the G-DAM of PXIL and HPX. The volume of total buy bids and

sell bids was 1356.28 MU and 562.63 MU respectively in IEX. While the volume of total buy bids was 16.32 MU, no sell bids were received at PXIL. No bids were received at HPX.

2.9. The volume of electricity transacted in the RTM of IEX and PXIL was 2265.25 MU and 0.15 MU respectively, while no electricity was transacted in the RTM of HPX. The volume of total buy bids and sell bids was 3799.99 MU and 3611.00 MU respectively in IEX, while the same was 0.15 MU and 0.16 MU respectively in PXIL. The volume of total buy bids was 0.003 MU in HPX, while no sell bids were received. The variation in the volume of buy bids and sell bids placed through power exchanges shows variation in the demand and supply position.

2.10. The volume of electricity transacted in the TAM of IEX, PXIL and HPX was 722.88 MU, 486.81 MU and 259.85 MU respectively (Table-8, Table-9 & Table-10). The volume of electricity transacted in the Green Term Ahead Market (G-TAM) of IEX and PXIL was 115.46 MU and 61.34 MU respectively (Table-11 & Table-12). No electricity was transacted in G-TAM of HPX.

3. Price of Short-term Transactions of Electricity

3.1. **Price of electricity transacted through Traders:** The minimum, maximum and weighted average sale prices for the electricity transacted through traders were ₹2.70/kWh, ₹11.48/kWh and ₹4.70/kWh respectively (Table-3). The weighted average sale prices were also computed for the electricity transacted during Round the Clock (RTC), Peak and Off-peak periods separately, and the sale prices were ₹4.63/kWh, ₹7.88/kWh and ₹4.89/kWh respectively (Table-4).

3.2. **Price of electricity transacted through Power Exchanges:** The minimum, maximum and weighted average prices for the electricity transacted in the DAM of IEX were ₹1.31/kWh, ₹12.00/kWh and ₹5.43/kWh respectively. These prices in the DAM of PXIL were ₹2.58/kWh, ₹12.00/kWh and ₹7.29/kWh respectively (Table-5). The minimum, maximum and weighted average prices for the electricity transacted in the G-DAM of IEX were ₹2.80/kWh, ₹12.00/kWh and ₹5.20/kWh respectively (Table-6). The minimum, maximum and weighted average prices for the electricity transacted in the RTM of IEX were ₹0.08/kWh, ₹12.00/kWh and ₹4.90/kWh respectively. These prices in the RTM of PXIL were ₹3.20/kWh, ₹3.30/kWh

and ₹3.20/kWh respectively (Table-7). The weighted average price of electricity transacted in the TAM of IEX, PXIL and HPX was ₹6.23/kWh, ₹5.58/kWh and ₹5.80/kWh respectively (Table-8, Table-9 and Table-10). The price of electricity transacted in the G-TAM of IEX and PXIL was ₹4.97/kWh and ₹4.70/kWh respectively (Table-11 and Table-12). No electricity was transacted in G-DAM of PXIL and in DAM, G-DAM, RTM & G-TAM of HPX.

3.3. **Price of electricity transacted through DSM:** The minimum, maximum and average price of DSM was ₹0.00/kWh, ₹8.00/kWh and ₹4.60/kWh respectively (Table-13).

3.4. The comparison of weighted average prices of electricity transacted through trading licensees, power exchanges & average price of DSM are shown in Figure-6. The daily prices of electricity transacted through power exchanges & DSM and their comparison are shown in Table-27(a), (b) & (c) and Figure-7.

4. Trading Margin

4.1. As per the CERC (Procedure, Terms and Conditions for grant of trading licence and other related matters) Regulations 2020, the trading licensees are allowed to charge trading margin of not less than 0 paise/kWh and upto 7 paise/kWh. The weighted average trading margin charged by the trading licensees for bilateral transactions during the month was ₹0.024/kWh.

5. Volume of Short-term Transactions of Electricity (Regional Entity¹-Wise)

5.1. Of the total bilateral transactions, top 5 regional entities/states sold 45.53% of the volume. These were Madhya Pradesh, Himachal Pradesh, Teesta Stage 3 Hydro Power Project, Maharashtra and Raipur Energen Limited (Table-14). Top 5 regional entities/states purchased 67.33% of the volume, and these were Punjab, Haryana, Delhi, Uttar Pradesh and Maharashtra (Table-15).

5.2. Of the total DAM transactions at power exchanges, top 5 regional entities/states sold 35.46% of the volume, and these were Telangana, Kerala, Nepal (through NRVN), Karnataka and Madhya Pradesh (Table-16). Top 5 regional entities/states purchased 47.01% of the

¹ In case of a State, the entities which are “selling” also include generators connected to State Grid and the entities which are “buying” also include open access consumers.

volume, and these were Gujarat, Maharashtra, Uttar Pradesh, Andhra Pradesh and West Bengal (Table-17).

5.3. Of the total G-DAM transactions at power exchanges, top 5 regional entities/states sold 62.78% of the volume, and these were Andhra Pradesh, Karnataka, Adani Wind Energy, Adani Hybrid Energy Jaisalmer Four Limited (Solar) and Madhya Pradesh (Table-18). Top 5 regional entities/states purchased 61.27% of the volume, and these were Maharashtra, Gujarat, Assam, Arcelor Mittal Nippon Steel Hazira and DVC (Table-19).

5.4. Of the total RTM transactions at power exchanges, top 5 regional entities/states sold 47.16% of the volume, and these were Madhya Pradesh, Kerala, Rajasthan, Karnataka and Bihar (Table-20). Top 5 regional entities/states purchased 50.77% of the volume, and these were Maharashtra, Telangana, Uttar Pradesh, West Bengal and Punjab (Table-21).

5.5. Of the total under drawal in August 2022, top 5 regional entities/states under drew 25.47% of the volume, and these were Chhukha Hydroelectric Project Bhutan, Gujarat, Madhya Pradesh, Tamil Nadu and NHPC Stations (Table-22). Top 5 regional entities/states overdrew 24.78% of the total over drawal volume, and these were Tala Hydroelectric Project Bhutan, NTPC Stations (Western Region), NTPC Stations (Northern Region), Haryana and Uttar Pradesh (Table-23).

5.6. The total volume of net short-term transactions of electricity (Regional entity-wise), i.e., volume of net transactions through bilateral, power exchanges and DSM are shown in Table-24 & 28. Top 5 electricity selling regional entities/states were Madhya Pradesh, Himachal Pradesh, Teesta Stage 3 Hydro Power Project, Karnataka and Kerala. Top 5 electricity purchasing regional entities/states were Punjab, Haryana, Uttar Pradesh, Maharashtra and Delhi.

6. Congestion² on Inter-State Transmission Corridor for Day-Ahead Market and Real Time Market on Power Exchanges

² “Congestion” means a situation where the demand for transmission capacity exceeds the available transfer capability

6.1. Power exchanges use a price discovery mechanism in which the aggregate demand and supply are matched to arrive at an unconstrained market price and volume. This process assumes that there is no congestion in the inter-State transmission system between different regions. However, in reality, the system operator (NLDC) in coordination with RLDCs limits the flow (due to congestion) in the inter-State transmission system. In such a situation, power exchanges adopt a mechanism called “Market Splitting”³.

6.2. The volume of electricity that could not be cleared due to congestion & other reasons and could not be transacted through power exchanges is the difference between unconstrained cleared volume and actual cleared volume. During the month of August 2022, congestion was experienced in only RTM of IEX (Table-25).

6.3. The volume of electricity that could not be cleared due to congestion in RTM of IEX was 0.02% of the unconstrained cleared volume. In terms of time, congestion occurred was 0.50% during the month (Table-25).

7. Volume and Price of Renewable Energy Certificates (RECs)

7.1. The concept of Renewable Energy Certificates (RECs) seeks to address mismatch between availability of renewable energy and the requirement of the obligated entities to meet their renewable purchase obligation by purchasing green attributes of renewable energy remotely located, in the form of RECs. The REC mechanism is a market based instrument, to promote renewable sources of energy and development of electricity market.

7.2. One REC is equivalent to 1 MWh electricity injected into the grid from renewable energy sources. The REC is exchanged only in the power exchanges approved by CERC within the band of a floor price and forbearance (ceiling) price as notified by CERC from time to time. The first REC trading was held on power exchanges in May, 2011.

³“Market Splitting” is a mechanism adopted by Power Exchanges, where the market is split in the event of transmission congestion, into predetermined (by NLDC) bid areas or zones, which are cleared individually at their respective area prices such that the energy balance in every bid area is reached based upon the demand and supply in individual bid areas and using the available transmission corridor capacity between various bid areas simultaneously. As a result of this market splitting the price of electricity in the importing region, where demand for electricity is more than supply, becomes relatively higher than the price of electricity in the exporting region.

7.3. The details of REC transactions for the month of August 2022 are shown in Table-29. The market clearing volume of solar RECs transacted on IEX and PXIL were 432641 and 166168 respectively and the weighted average market clearing price of these RECs was ₹1000/MWh in IEX and ₹1000/MWh in PXIL. Market clearing volume of non-solar RECs transacted on IEX, PXIL and HPX were 418260, 165354 and 690 respectively, and the weighted average market clearing price of these RECs was ₹1000/MWh in IEX, ₹1000/MWh in PXIL and ₹1000/MWh in HPX. No Solar RECs were transacted on HPX.

7.4. The gap between the volume of buy and sell bids of RECs placed through power exchanges shows the variation in demand for both solar and non-solar RECs. For Solar RECs, the ratio of buy bids to sell bids was 0.11 and 0.07 in IEX and PXIL respectively. For non-solar RECs, the ratio of buy bids to sell bids 0.14, 0.08 and 0.45 in IEX, PXIL and HPX respectively.

8. Inferences:

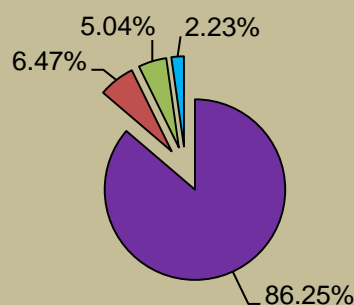
- a) The percentage of short-term transactions of electricity to total electricity generation was 13.75%.
- b) Of the total short-term transactions (16702.18 MU), 47.08% was transacted through bilateral (28.86% through traders and term-ahead contracts on power exchanges, and 18.21% directly between distribution companies), followed by 36.67% through power exchanges {DAM (including G-DAM) and RTM} and 16.25% through DSM
- c) Of the total volume of electricity transacted through power exchanges, 49.66% of the volume was transacted in DAM (including G-DAM), followed by 29.15% in RTM and 21.19% in Term Ahead Market (TAM) (including G-TAM).
- d) Top 5 trading licensees had a share of 80.42% in the total volume traded by all the trading licensees.
- e) The Herfindahl Hirschman Index computed for the volume of electricity traded by trading licensees was 0.1917, indicating moderate concentration of market power.
- f) The weighted average sale price of electricity transacted through trading licensees was ₹4.70/kWh.

- g) The weighted average price of electricity transacted in DAM of IEX and PXIL was ₹5.43/kWh, ₹7.29/kWh respectively, while no electricity was transacted in DAM of HPX. The weighted average price of electricity transacted in G-DAM of IEX was ₹5.20/kWh, while no electricity was transacted in G-DAM of PXIL and HPX. The weighted average price of electricity transacted in RTM of IEX and PXIL was ₹4.90/kWh and ₹3.20/kWh respectively. No electricity was transacted in the RTM of HPX.
- h) The weighted average price of electricity transacted in the TAM of IEX, PXIL and HPX was ₹6.23/kWh, ₹5.58/kWh and ₹5.80/kWh respectively. The weighted average price of electricity transacted in the G-TAM of IEX and PXIL was ₹4.97/kWh and ₹4.70/kWh respectively.
- i) The average price of electricity transacted through DSM was ₹4.60/kWh.
- j) The weighted average trading margin charged by the trading licensees for bilateral transactions was ₹0.024/kWh, which was in line with the Trading Licence Regulations 2020.
- k) Top 5 electricity selling regional entities/states were Madhya Pradesh, Himachal Pradesh, Teesta Stage 3 Hydro Power Project, Karnataka and Kerala. Top 5 electricity purchasing regional entities/states were Punjab, Haryana, Uttar Pradesh, Maharashtra and Delhi.
- l) During the month of August 2022, congestion was experienced in only RTM of IEX. The volume of electricity that could not be cleared in RTM due to congestion was 0.02% of the unconstrained cleared volume. In terms of time, congestion occurred was 0.50% during the month.
- m) The market clearing volume of solar RECs transacted on IEX and PXIL were 432641 and 166168 respectively and the weighted average market clearing price of these RECs was ₹1000/MWh in IEX and ₹1000/MWh in PXIL. Market clearing volume of non-solar RECs transacted on IEX, PXIL and HPX were 418260, 165354 and 690 respectively, and the weighted average market clearing price of these RECs was ₹1000/MWh in IEX, ₹1000/MWh in PXIL and ₹1000/MWh in HPX. No Solar RECs were transacted on HPX.

Table-1: VOLUME OF SHORT-TERM TRANSACTIONS OF ELECTRICITY (ALL INDIA), AUGUST 2022				
Sr. No	Short-term transactions	Volume (MU)	% to Volume of short-term transactions	% to Total Generation
1	Bilateral	7862.84	47.08	6.47
	(i) Through Traders and PXs	4820.83	28.86	3.97
	(ii) Direct	3042.02	18.21	2.50
2	Through Power Exchanges	6124.73	36.67	5.04
	(i) IEX			
	(a) DAM	3528.70	21.13	2.90
	(b) RTM	2265.25	13.56	1.86
	(c) GDAM	320.50	1.92	0.26
	(ii) PXIL			
	(a) DAM	10.12	0.06	0.01
	(b) RTM	0.15	0.00	0.00
	(c) GDAM	0.00	0.00	0.00
	(ii) HPX			
	(a) DAM	0.00	0.00	0.000
	(b) RTM	0.00	0.00	0.00
	(c) GDAM	0.00	0.00	0.00
3	Through DSM	2714.61	16.25	2.23
	Total Short-term transactions	16702.18	-	13.75
	Total Generation	121489.62	-	-

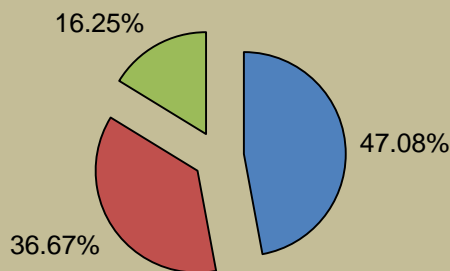
Source: NLDC

Figure-1: Volume of Various Kinds of Electricity Transactions in Total Electricity Generation, August 2022



■ Long-term
 ■ Bilateral
 ■ Through Power Exchanges
 ■ Through DSM

Figure-2: Volume of Short-term Transactions of Electricity, August 2022



■ Bilateral
 ■ Power Exchanges
 ■ DSM

Figure-3: Volume transacted in different markets segments on Power Exchanges, August 2022

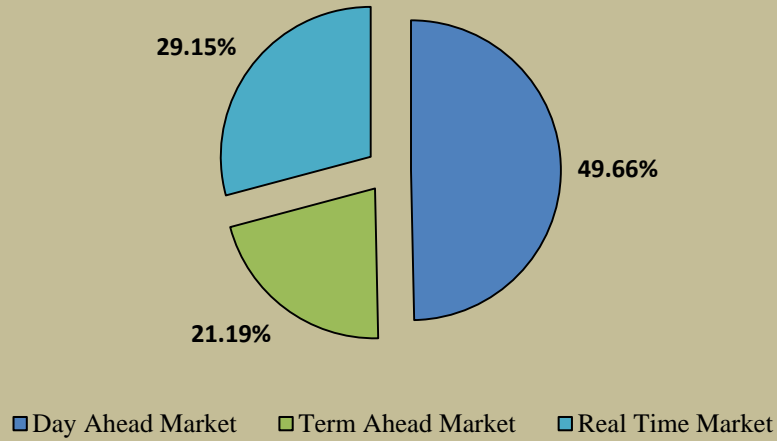


Figure-4: Volume of Short-term Transactions of Electricity, August 2022 (Day-wise)

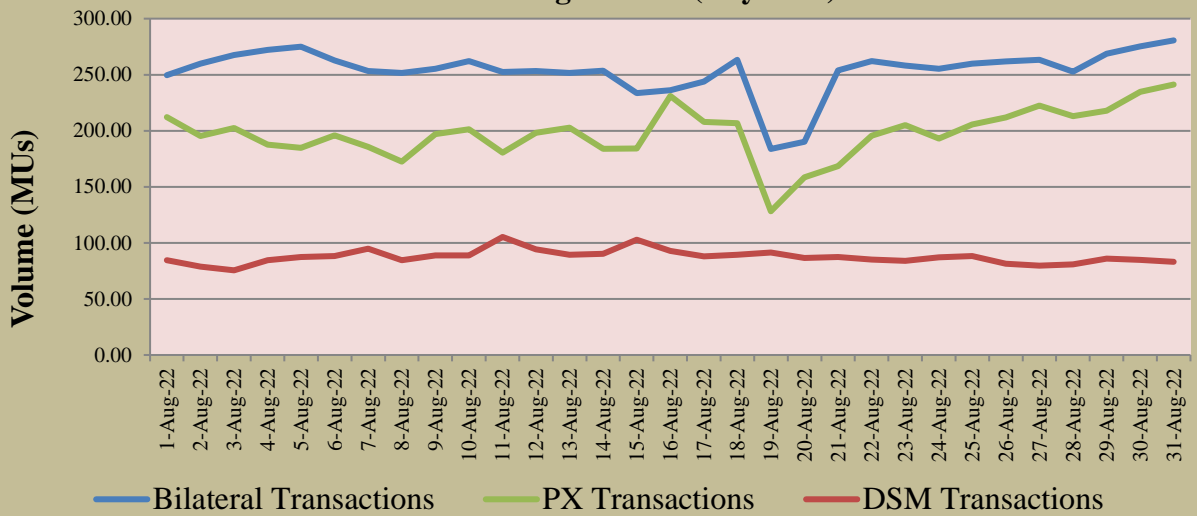


Table-2: PERCENTAGE SHARE OF ELECTRICITY TRANSACTED BY TRADING LICENSEES, AUGUST 2022			
Sr. No	Name of the Trading Licensee	% Share in total Volume transacted by Trading Licensees	Herfindahl-Hirschman Index
1	PTC India Ltd.	36.61	0.1340
2	NTPC Vidyut Vyapar Nigam Ltd.	14.00	0.0196
3	Tata Power Trading Company (P) Ltd.	13.46	0.0181
4	Manikaran Power Ltd.	8.88	0.0079
5	Adani Enterprises Ltd.	7.47	0.0056
6	GMR Energy Trading Ltd.	5.56	0.0031
7	Arunachal Pradesh Power Corporation (P) Ltd	4.66	0.0022
8	Kreate Energy (I) Pvt. Ltd.	2.63	0.0007
9	Greenko Energies Pvt Ltd	1.39	0.0002
10	Instinct Infra & Power Ltd.	0.89	0.0001
11	Saranyu Power Trading Private Limited	0.82	0.0001
12	JSW Power Trading Company Ltd	0.78	0.0001
13	NTPC Ltd.	0.57	0.0000
14	Statkraft Markets Pvt. Ltd.	0.53	0.0000
15	RPG Power Trading Company Ltd.	0.52	0.0000
16	Shubheksha Advisors Pvt. Ltd.	0.38	0.0000
17	Kundan International Pvt. Ltd.	0.30	0.0000
18	Abja Power Private Limited	0.15	0.0000
19	Ambitious Power Trading Company Ltd.	0.13	0.0000
20	NLC India Ltd.	0.09	0.0000
21	Knowledge Infrastructure Systems (P) Ltd	0.07	0.0000
22	Instant Venture Pvt. Ltd.	0.05	0.0000
23	Shree Cement Ltd.	0.04	0.0000
24	Altilium Energie Private Limited	0.02	0.0000
25	Phillip Commodities India (P) Ltd.	0.01	0.0000
26	Gita Power & Infrastructure Private Limited	0.006	0.0000
27	Renurja Power LLP	0.001	0.0000
28	Customized Energy Solutions India (P) Ltd.	0.001	0.0000
TOTAL		100.00%	0.1917
Top 5 trading licensees		80.42%	
<i>Note 1: Volume of electricity transacted by the trading licensees includes bilateral transactions (inter-state & intra-state) and the transactions undertaken through power exchanges.</i>			
<i>Note 2: Volume of electricity transacted by Global Energy Ltd. is not included.</i>			
<i>Source: Information submitted by trading licensees</i>			

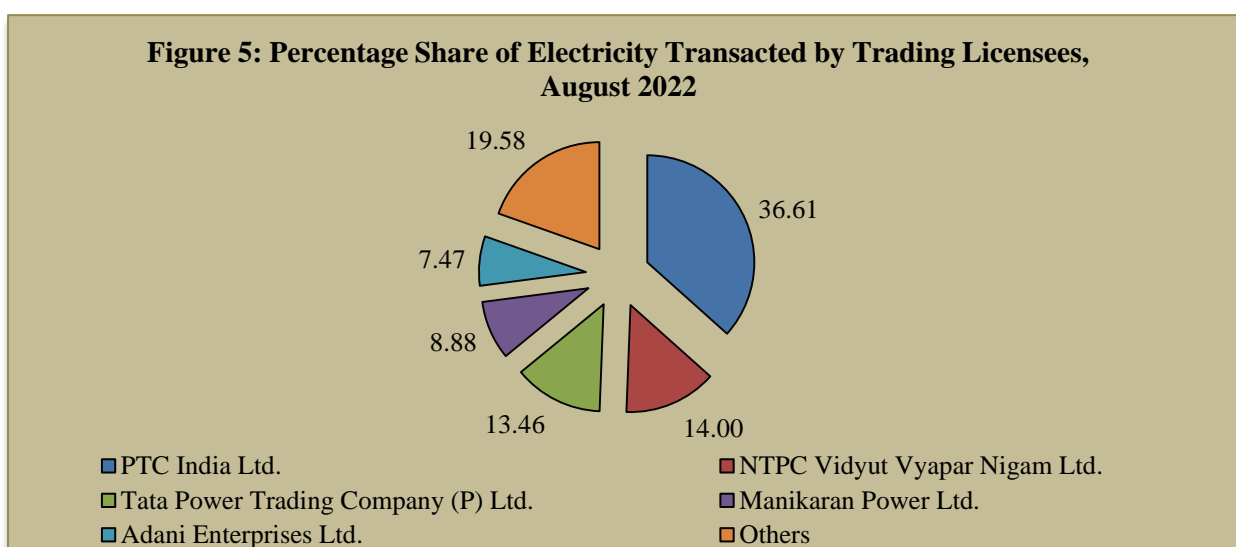


Table-3: PRICE OF ELECTRICITY TRANSACTED THROUGH TRADERS, AUGUST 2022		
Sr.No	Item	Sale Price of Traders (₹/kWh)
1	Minimum	2.70
2	Maximum	11.48
3	Weighted Average	4.70

Source: Information submitted by trading licensees

Table-4: PRICE OF ELECTRICITY TRANSACTED THROUGH TRADERS (TIME-WISE), AUGUST 2022		
Sr.No	Period of Trade	Sale Price of Traders (₹/kWh)
1	RTC	4.63
2	PEAK	7.88
3	OFF PEAK	4.89

Source: Information submitted by trading licensees

Table-5: PRICE OF ELECTRICITY TRANSACTED IN DAY AHEAD MARKET THROUGH POWER EXCHANGES, AUGUST 2022				
Sr.No	ACP	Price in IEX (₹/kWh)	Price in PXIL (₹/kWh)	Price in HPX (₹/kWh)
1	Minimum	1.31	2.58	-
2	Maximum	12.00	12.00	-
3	Weighted Average	5.43	7.29	-

Source: IEX, PXIL and HPX

Table-6: PRICE OF ELECTRICITY TRANSACTED IN GREEN DAY AHEAD MARKET THROUGH POWER EXCHANGES, AUGUST 2022				
Sr.No	ACP	Price in IEX (₹/kWh)	Price in PXIL (₹/kWh)	Price in HPX (₹/kWh)
1	Minimum	2.80	-	-
2	Maximum	12.00	-	-
3	Weighted Average	5.20	-	-

Source: IEX, PXIL and HPX

Table-7: PRICE OF ELECTRICITY TRANSACTED IN REAL TIME MARKET THROUGH POWER EXCHANGES, AUGUST 2022				
Sr.No	ACP	Price in IEX (₹/kWh)	Price in PXIL (₹/kWh)	Price in HPX (₹/kWh)
1	Minimum	0.08	3.20	-
2	Maximum	12.00	3.30	-
3	Weighted Average	4.90	3.20	-

Source: IEX, PXIL and HPX

Table-8: VOLUME AND PRICE OF ELECTRICITY IN TERM AHEAD MARKET OF IEX, AUGUST 2022			
Sr.No	Term ahead contracts	Actual Scheduled Volume (MU)	Weighted Average Price (₹/kWh)
1	Intra-Day Contracts	1.60	9.85
2	Day Ahead Contingency Contracts	598.89	6.27
3	Daily Contracts	0.00	0.00
4	Weekly Contracts	122.40	5.98
	Total	722.88	6.23

Source: IEX

Table-9: VOLUME AND PRICE OF ELECTRICITY IN TERM AHEAD MARKET OF PXIL, AUGUST 2022			
Sr.No	Term ahead contracts	Actual Scheduled Volume (MU)	Weighted Average Price (₹/kWh)
1	Intra-Day Contracts	9.04	11.37
2	Day Ahead Contingency Contracts	477.76	5.47
	Total	486.81	5.58

Source: PXIL

Table-10: VOLUME AND PRICE OF ELECTRICITY IN TERM AHEAD MARKET OF HPX, AUGUST 2022			
Sr.No	Term ahead contracts	Actual Scheduled Volume (MU)	Weighted Average Price (₹/kWh)
1	Intra-Day Contracts	0.63	12.00
2	Day Ahead Contingency Contracts	259.23	5.78
	Total	259.85	5.80

Source: HPX

Table-11: VOLUME AND PRICE OF ELECTRICITY IN GREEN TERM AHEAD MARKET OF IEX, AUGUST 2022			
Sr.No	Green Term ahead contracts	Actual Scheduled Volume (MU)	Weighted Average Price (₹/kWh)
1	Intra-Day Contracts	1.20	3.07
2	Day Ahead Contingency Contracts	112.47	4.98
3	Weekly Contracts	1.79	5.80
	Total	115.46	4.97

Source: IEX

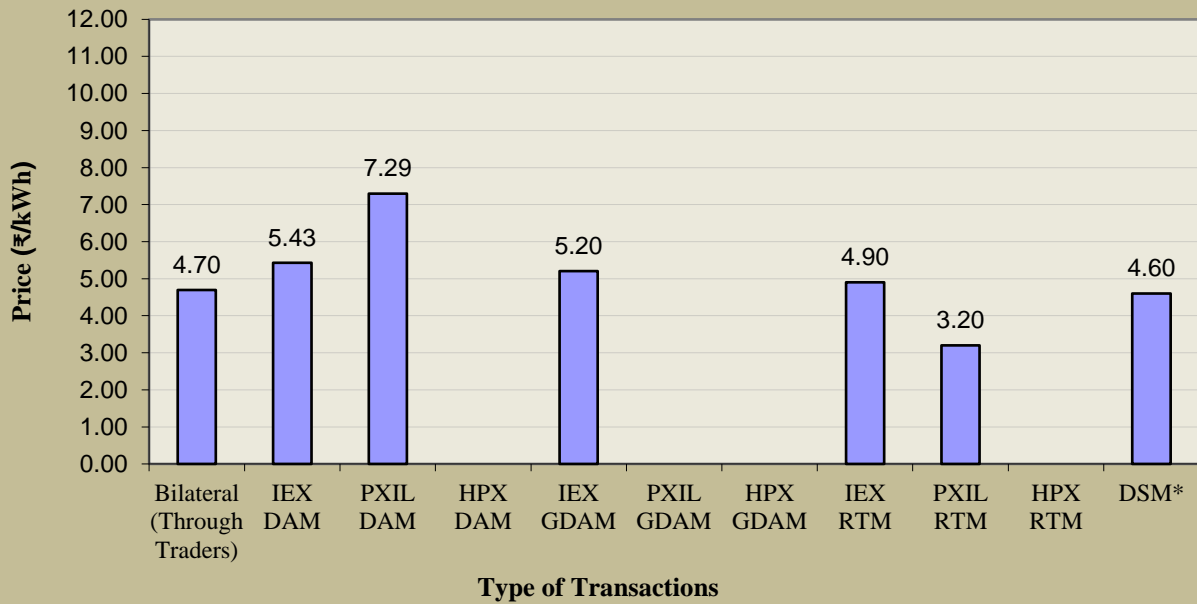
Table-12: VOLUME AND PRICE OF ELECTRICITY IN GREEN TERM AHEAD MARKET OF PXIL, AUGUST 2022			
Sr.No	Green Term ahead contracts	Actual Scheduled Volume (MU)	Weighted Average Price (₹/kWh)
1	Day Ahead Contingency Contracts	61.34	4.70
	Total	61.34	4.70

Source: PXIL

Table-13: PRICE OF ELECTRICITY TRANSACTED THROUGH DSM, AUGUST 2022		
Sr.No	Item	Price in All India Grid (₹/kWh)
1	Minimum	0.00
2	Maximum	8.00
3	Average	4.60

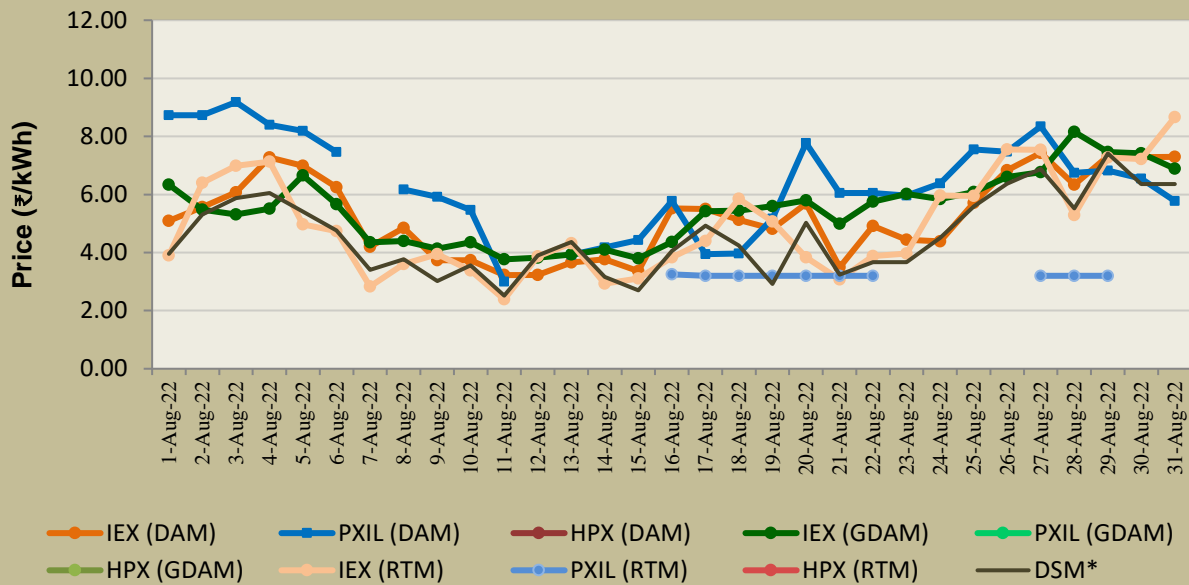
Source: NLDC

Figure-6: Weighted Average Price of Short-term Transactions of Electricity, August 2022



*Note: No electricity was transacted in G-DAM of PXIL and DAM, G-DAM & RTM of HPX during August 2022.
* Simple average price of DSM of the month*

Figure-7: Weighted Average Price of Short-term Transactions of Electricity, August 2022 (Day-wise)



Note: On PXIL, transactions were recorded in RTM only on 16th – 22nd, 27th – 29th August 2022. In case of DAM at PXIL, no transactions took place on 7th and 12th August 2022. Further, no electricity was transacted in G-DAM of PXIL and in DAM, G-DAM & RTM of HPX during August 2022.

** Simple average price of DSM for each day of the month*

Table-14: VOLUME OF ELECTRICITY SOLD THROUGH BILATERAL, AUGUST 2022		
Name of the Entity	Volume of Sale (MUs)	% of Volume
MP	1259.08	16.01
HIMACHAL PRADESH	1077.19	13.70
TEESTA STG3	616.76	7.84
MAHARASHTRA	350.88	4.46
RPREL	275.94	3.51
SEMBCORP	234.07	2.98
ADHUNIK POWER LTD	212.41	2.70
JITPL	210.49	2.68
TAMIL NADU	210.48	2.68
J & K	198.28	2.52
KARNATAKA	179.60	2.28
RAJASTHAN	152.38	1.94
JAYPEE NIGRIE	137.38	1.75
ANDHRA PRADESH	118.11	1.50
MB POWER	113.93	1.45
AHEJ4L_SOLAR	105.58	1.34
DVC	105.12	1.34
JINDAL POWER	102.00	1.30
MEGHALAYA	99.62	1.27
KARCHAM WANGTOO	98.12	1.25
WEST BENGAL	93.56	1.19
TELANGANA	91.56	1.16
DAGACHU	91.35	1.16
AD HYDRO	89.70	1.14
SKS POWER	86.34	1.10
AHEJ4L_WIND	84.35	1.07
TASHIDENG HEP	76.13	0.97
GUJARAT	75.91	0.97
JORETHANG	75.52	0.96
DIKCHU HEP	72.31	0.92
JINDAL STAGE-II	69.80	0.89
KERALA	69.40	0.88
ESSAR POWER	67.44	0.86
SINGOLI BHATWARI HEP	67.42	0.86
ABC_BHDL2	53.64	0.68
ARUNACHAL PRADESH	53.44	0.68
ACME_HEERGARH	47.44	0.60
UTTAR PRADESH	47.35	0.60
SAINJ HEP	44.00	0.56
AHEJ2L_SOLAR	42.08	0.54
CLEANSR_SLR	41.22	0.52
SORANG HEP	40.45	0.51
JHABUA POWER_MP	37.52	0.48
TATA_GREEN	36.79	0.47
AHEJ3L_SOLAR	36.54	0.46
RKM POWER	35.95	0.46
UTTARAKHAND	33.05	0.42
KOLYAT_SLR	32.89	0.42
TATA_SLR	29.29	0.37

THERMAL POWERTECH	28.15	0.36
GOA	27.21	0.35
THARI_SLR	26.87	0.34
SIKKIM	26.70	0.34
BIHAR	26.20	0.33
AHEJ3L_WIND	19.49	0.25
RENEW_SR_SLR	18.30	0.23
AHEJ2L_WIND	17.03	0.22
MANIPUR	15.37	0.20
TRN ENERGY	14.88	0.19
NAGALAND	11.55	0.15
OSTRO	8.29	0.11
SHREE CEMENT	5.47	0.07
LANKO_AMK	5.21	0.07
GMR KAMALANGA	5.16	0.07
JHARKHAND	4.86	0.06
ADANI_WIND	4.55	0.06
CHHATTISGARH	4.24	0.05
EMCO	4.21	0.05
PUNJAB	3.33	0.04
HARYANA	2.91	0.04
REGL	2.09	0.03
ODISHA	0.46	0.01
DB POWER	0.23	0.003
Total	7862.60	100.00
Volume Sold by top 5 Regional Entities	3579.85	45.53

Table-15: VOLUME OF ELECTRICITY PURCHASED THROUGH BILATERAL, AUGUST 2022		
Name of the Entity	Volume of Purchase (MUs)	% of Volume
PUNJAB	2141.99	27.24
HARYANA	919.79	11.70
DELHI	884.19	11.25
UTTAR PRADESH	752.51	9.57
MAHARASHTRA	595.51	7.57
ODISHA	595.13	7.57
WEST BENGAL	316.99	4.03
TELANGANA	289.73	3.68
GUJARAT	173.88	2.21
JHARKHAND	157.89	2.01
AMPS Hazira	153.70	1.95
BANGLADESH	148.14	1.88
BALCO	145.71	1.85
ANDHRA PRADESH	91.99	1.17
BIHAR	79.51	1.01
GOA	71.86	0.91
RAJASTHAN	71.80	0.91
MP	68.87	0.88
ASSAM	61.49	0.78
CHHATTISGARH	34.97	0.44
SIKKIM	22.11	0.28
PONDICHERRY	18.29	0.23
MEGHALAYA	15.65	0.20
NCR ALLAHABAD	14.00	0.18
DD&DNH	13.66	0.17
TAMIL NADU	11.63	0.15
UTTARAKHAND	10.92	0.14
DVC	0.78	0.01
KARNATAKA	0.17	0.002
TOTAL	7862.84	100.00
Volume Purchased by top 5 Regional Entities	5293.99	67.33

Table-16: VOLUME OF ELECTRICITY SOLD IN DAY AHEAD MARKET THROUGH POWER EXCHANGES, AUGUST 2022		
Name of the Entity	Volume of Sale (MUs)	% of Volume
TELANGANA	311.40	8.80
KERALA	276.36	7.81
NEPAL(NVVN)	239.12	6.76
KARNATAKA	216.26	6.11
MP	211.87	5.99
UTTAR PRADESH	181.88	5.14
HIMACHAL PRADESH	175.60	4.96
NEEPCO STATIONS	147.48	4.17
RAJASTHAN	136.54	3.86
SEMBCORP	125.72	3.55
BIHAR	122.68	3.47
DELHI	104.31	2.95
TEESTA STG3	102.67	2.90
JITPL	102.60	2.90
PUNJAB	79.54	2.25
RPREL	75.49	2.13
JAYPEE NIGRIE	68.72	1.94
DB POWER	64.53	1.82
TAMIL NADU	55.32	1.56
JINDAL STAGE-II	44.68	1.26
UTTARAKHAND	39.17	1.11
AD HYDRO	38.09	1.08
ANDHRA PRADESH	36.19	1.02
MB POWER	36.01	1.02
SAINJ HEP	35.76	1.01
JINDAL POWER	33.60	0.95
J & K	29.56	0.84
MIZORAM	28.52	0.81
THERMAL POWERTECH	27.59	0.78
WEST BENGAL	25.07	0.71
KARCHAM WANGTOO	23.49	0.66
JHARKHAND	23.41	0.66
ODISHA	23.33	0.66
GOA	22.89	0.65
CHHATTISGARH	22.76	0.64
ESSAR POWER	21.93	0.62
CHANDIGARH	21.35	0.60
HARYANA	14.29	0.40
ADHUNIK POWER LTD	14.22	0.40
SKS POWER	13.15	0.37
MAHARASHTRA	13.03	0.37
CGPL	12.68	0.36
ARUNACHAL PRADESH	12.44	0.35
ASSAM	11.71	0.33
CHUZACHEN HEP	11.22	0.32
ONGC PALATANA	11.15	0.32
SIKKIM	10.81	0.31
ADANI GREEN	9.90	0.28

NLC	9.17	0.26
GUJARAT	8.26	0.23
RKM POWER	8.09	0.23
LANCO BUDHIL	6.52	0.18
RENEW_SR_SLR	6.36	0.18
SINGOLI BHATWARI HEP	4.92	0.14
NTPC STATIONS-NR	4.04	0.11
NAGALAND	3.48	0.10
DIKCHU HEP	3.39	0.10
EMCO	3.02	0.09
SHREE CEMENT	2.97	0.08
GMR KAMALANGA	2.92	0.08
TASHIDENG HEP	1.97	0.06
JORETHANG	1.80	0.05
DVC	1.49	0.04
IL&FS	1.24	0.04
NTPC STATIONS-NER	0.66	0.02
MEGHALAYA	0.64	0.02
REGL	0.57	0.02
NTPC STATIONS-SR	0.45	0.01
ADANI_WIND	0.29	0.01
SORANG HEP	0.21	0.01
DHARIWAL POWER	0.10	0.003
OSTRO	0.08	0.002
AHEJ4L_SOLAR	0.05	0.001
AHEJ3L_SOLAR	0.02	0.0005
AHEJ2L_SOLAR	0.01	0.0002
Total	3538.82	100.00
Volume sold by top 5 Regional Entities	1255.01	35.46

Table-17: VOLUME OF ELECTRICITY PURCHASED IN DAY AHEAD MARKET THROUGH POWER EXCHANGES, AUGUST 2022		
Name of the Entity	Volume of Purchase (MUs)	% of Volume
GUJARAT	409.05	11.56
MAHARASHTRA	404.69	11.44
UTTAR PRADESH	315.40	8.91
ANDHRA PRADESH	290.51	8.21
WEST BENGAL	243.92	6.89
TELANGANA	241.92	6.84
TAMIL NADU	217.08	6.13
HARYANA	215.14	6.08
ODISHA	188.76	5.33
ASSAM	172.17	4.87
AMPS Hazira	153.33	4.33
DD&DNH	123.02	3.48
MP	112.99	3.19
RAJASTHAN	73.79	2.09
PUNJAB	65.42	1.85
JHARKHAND	55.34	1.56
CHHATTISGARH	50.54	1.43
DELHI	42.89	1.21
KARNATAKA	40.20	1.14
RAIL	33.94	0.96
BIHAR	17.87	0.51
DVC	14.34	0.41
GOA	11.63	0.33
NEP	10.57	0.30
KERALA	8.51	0.24
UTTARAKHAND	6.47	0.18
MEGHALAYA	6.45	0.18
BALCO	6.24	0.18
TRIPURA	4.75	0.13
CHANDIGARH	0.81	0.02
MANIPUR	0.63	0.02
HIMACHAL PRADESH	0.46	0.01
TOTAL	3538.82	100.00
Volume purchased by top 5 Regional Entities	1663.58	47.01

Table-18: VOLUME OF ELECTRICITY SOLD IN GREEN DAY AHEAD MARKET THROUGH POWER EXCHANGES, AUGUST 2022

Name of the Entity	Volume of Sale (MUs)	% of Volume
ANDHRA PRADESH	80.89	25.24
KARNATAKA	42.74	13.33
ADANI_WIND	28.03	8.75
AHEJ4L_SOLAR	26.81	8.36
MP	22.74	7.10
AHEJ3L_SOLAR	18.25	5.69
J & K	17.00	5.30
HIMACHAL PRADESH	15.76	4.92
TELANGANA	13.62	4.25
NTPC STATIONS-SR	10.24	3.20
KERALA	9.23	2.88
AHEJ2L_SOLAR	9.03	2.82
OSTRO	8.28	2.58
MAHARASHTRA	6.25	1.95
UTTAR PRADESH	5.82	1.81
RAJASTHAN	4.93	1.54
DELHI	0.76	0.24
TAMIL NADU	0.11	0.04
HARYANA	0.01	0.004
Total	320.50	100.00
Volume sold by top 5 Regional Entities	201.21	62.78

Table-19: VOLUME OF ELECTRICITY PURCHASED IN GREEN DAY AHEAD MARKET THROUGH POWER EXCHANGES, AUGUST 2022		
Name of the Entity	Volume of Purchase (MUs)	% of Volume
MAHARASHTRA	47.28	14.75
GUJARAT	42.44	13.24
ASSAM	39.76	12.40
AMPS Hazira	34.62	10.80
DVC	32.27	10.07
DELHI	26.41	8.24
HARYANA	15.29	4.77
DD&DNH	13.37	4.17
MP	12.71	3.97
JHARKHAND	11.59	3.62
KARNATAKA	10.11	3.15
RAIL	9.59	2.99
ODISHA	6.90	2.15
RAJASTHAN	5.15	1.61
BALCO	3.84	1.20
PUNJAB	3.59	1.12
TAMIL NADU	3.09	0.97
KERALA	1.86	0.58
TELANGANA	0.31	0.10
MEGHALAYA	0.18	0.06
ANDHRA PRADESH	0.11	0.03
UTTAR PRADESH	0.05	0.01
TOTAL	320.50	100.00
Volume purchased by top 5 Regional Entities	196.37	61.27

Table-20: VOLUME OF ELECTRICITY SOLD IN REAL TIME MARKET THROUGH POWER EXCHANGES, AUGUST 2022

Name of the Entity	Volume of Sale (MUs)	% of Volume
MP	477.90	21.10
KERALA	156.48	6.91
RAJASTHAN	154.82	6.83
KARNATAKA	144.09	6.36
BIHAR	135.00	5.96
ANDHRA PRADESH	102.21	4.51
NEEPCO STATIONS	97.34	4.30
J & K	93.62	4.13
TELANGANA	91.49	4.04
DELHI	75.20	3.32
TAMIL NADU	74.14	3.27
ODISHA	71.92	3.17
WEST BENGAL	66.33	2.93
HIMACHAL PRADESH	58.06	2.56
UTTAR PRADESH	50.05	2.21
ASSAM	49.40	2.18
PUNJAB	40.33	1.78
NLC	33.63	1.48
CHHATTISGARH	28.71	1.27
JHARKHAND	26.80	1.18
SASAN UMPP	23.72	1.05
JINDAL STAGE-II	15.67	0.69
ONGC PALATANA	15.35	0.68
SEMBCORP	12.57	0.56
RPREL	12.18	0.54
DB POWER	11.14	0.49
TRIPURA	10.00	0.44
RKM POWER	9.61	0.42
MB POWER	8.34	0.37
HARYANA	8.29	0.37
MAHARASHTRA	8.23	0.36
GUJARAT	7.85	0.35
JITPL	6.97	0.31
CGPL	6.55	0.29
MANIPUR	6.26	0.28
SORANG HEP	5.93	0.26
SIKKIM	5.70	0.25
KARCHAM WANGTOO	5.52	0.24
ESSAR POWER	5.27	0.23
TRN ENERGY	5.23	0.23
THERMAL POWERTECH	4.90	0.22
ARUNACHAL PRADESH	4.17	0.18
CHANDIGARH	4.10	0.18
TEESTA STG3	3.86	0.17
ADHUNIK POWER LTD	3.79	0.17
JINDAL POWER	3.63	0.16
AD HYDRO	3.55	0.16
SKS POWER	3.50	0.15
SINGOLI BHATWARI HEP	2.01	0.09
DVC	1.74	0.08
UTTARAKHAND	1.65	0.07
GMR KAMALANGA	1.43	0.06
NAGALAND	1.41	0.06
DIKCHU HEP	1.09	0.05

SHREE CEMENT	1.04	0.05
MEGHALAYA	1.03	0.05
GOA	0.92	0.04
DD&DNH	0.82	0.04
OSTRO	0.62	0.03
IL&FS	0.46	0.02
TASHIDENG HEP	0.33	0.01
JORETHANG	0.30	0.01
EMCO	0.26	0.01
REGL	0.26	0.01
RENEW_SR_SLR	0.22	0.01
ADANI_WIND	0.19	0.01
JHABUA POWER_MP	0.15	0.01
CHUZACHEN HEP	0.06	0.002
SAINJ HEP	0.03	0.001
LANCO BUDHIL	0.01	0.0003
Total	2265.40	100.00
Volume sold by top 5 Regional Entities	1068.30	47.16

Table-21: VOLUME OF ELECTRICITY PURCHASED IN REAL TIME MARKET THROUGH POWER EXCHANGES, AUGUST 2022		
Name of the Entity	Volume of Purchase (MUs)	% of Volume
MAHARASHTRA	317.49	14.01
TELANGANA	241.03	10.64
UTTAR PRADESH	207.64	9.17
WEST BENGAL	202.53	8.94
PUNJAB	181.37	8.01
RAJASTHAN	169.90	7.50
ODISHA	132.17	5.83
HARYANA	130.27	5.75
GUJARAT	96.42	4.26
TAMIL NADU	93.56	4.13
ANDHRA PRADESH	78.73	3.48
DELHI	65.77	2.90
BALCO	41.35	1.83
DD&DNH	39.89	1.76
ASSAM	36.84	1.63
AMPS Hazira	36.66	1.62
BIHAR	34.00	1.50
CHHATTISGARH	31.50	1.39
DVC	30.73	1.36
HIMACHAL PRADESH	18.80	0.83
MEGHALAYA	18.33	0.81
MP	16.64	0.73
KARNATAKA	11.29	0.50
KERALA	5.47	0.24
UTTARAKHAND	5.22	0.23
MANIPUR	4.69	0.21
JHARKHAND	4.40	0.19
TRIPURA	3.86	0.17
GOA	3.44	0.15
RAIL	2.14	0.09
SAINJ HEP	1.03	0.05
KARCHAM WANGTOO	0.84	0.04
ARUNACHAL PRADESH	0.76	0.03
SIKKIM	0.30	0.01
SKS POWER	0.12	0.01
CHANDIGARH	0.12	0.01
SINGOLI BHATWARI HEP	0.08	0.003
LANCO BUDHIL	0.02	0.001
TOTAL	2265.40	100.00
Volume purchased by top 5 Regional Entities	1150.06	50.77

Table-22: VOLUME OF ELECTRICITY UNDER DRAWAL (EXPORTED) THROUGH DSM, AUGUST 2022

Name of the Entity	Volume of Under drawal (MUs)	% of Volume
CHUKHA HEP	166.68	6.11
GUJARAT	147.34	5.40
MP	133.59	4.90
TAMIL NADU	127.32	4.67
NHPC STATIONS	119.89	4.39
KAPP 3&4	115.90	4.25
NTPC STATIONS-WR	101.38	3.72
J & K	96.08	3.52
RAJASTHAN	79.50	2.91
BIHAR	76.68	2.81
KARNATAKA	76.43	2.80
MAHARASHTRA	66.48	2.44
WEST BENGAL	59.06	2.16
TELANGANA	59.02	2.16
ODISHA	58.41	2.14
UTTAR PRADESH	56.89	2.09
ANDHRA PRADESH	55.15	2.02
NTPC STATIONS-NR	53.80	1.97
KERALA	43.83	1.61
NTPC STATIONS-ER	39.03	1.43
PUNJAB	37.66	1.38
DELHI	31.11	1.14
DVC	30.65	1.12
SASAN UMPP	30.48	1.12
KURICHU HEP	27.51	1.01
CHHATTISGARH	27.28	1.00
ESSAR POWER	25.74	0.94
RENEWJH_SLR	24.57	0.90
NTPC STATIONS-SR	23.03	0.84
NLC	22.81	0.84
JHARKHAND	22.24	0.82
MANGDECHU HEP	19.51	0.72
ASSAM	19.44	0.71
HIMACHAL PRADESH	17.96	0.66
RENEWSW_SLR	16.85	0.62
HARYANA	15.45	0.57
ADANIHB_SLR	14.91	0.55
BBMB	14.89	0.55
UTTARAKHAND	13.58	0.50
AZURE43_SLR	12.85	0.47
NEPAL(NVVN)	12.45	0.46
NEEPCO STATIONS	12.12	0.44
GIWEL_BHUI	11.39	0.42
NPGC	10.98	0.40
THAR1_SLR	10.38	0.38
TEHRI	9.67	0.35
IGSTPS	9.50	0.35
TEESTA HEP	9.31	0.34
NJPC	9.18	0.34
MAITHON POWER LTD	9.02	0.33
CHANDIGARH	8.91	0.33
PONDICHERRY	8.85	0.32
AZURE_MAPLE_SLR	8.11	0.30
GIWEL_TCN	8.08	0.30
RAMPUR HEP	8.06	0.30
AD HYDRO	8.04	0.29
AVADARJHN_SLR	7.83	0.29
MYTRAH_TCN	7.60	0.28
AGEMPL_BHUI	7.13	0.26
ORANGE_TCN	7.07	0.26
RENEWSB	6.84	0.25
RENEW_BHUI	6.80	0.25
MIZORAM	6.71	0.25
AHEJ4L_SOLAR	6.66	0.24
SBSR_SLR	6.38	0.23
GOA	6.37	0.23
KARCHAM WANGTOO	6.12	0.22

JITPL	5.79	0.21
JAYPEE NIGRIE	5.75	0.21
OSTRO	5.75	0.21
MRPL	5.73	0.21
AHEJ2L_SOLAR	5.72	0.21
CLEAN_SLR	5.70	0.21
BETAM_TCN	5.69	0.21
RENEWURJA_SLR	5.63	0.21
TATA_SLR	5.62	0.21
SBG_NPK	5.53	0.20
TRIPURA	5.52	0.20
MB POWER	5.51	0.20
AHEJ3L_SOLAR	5.30	0.19
RKM POWER	5.23	0.19
ACME_SLR	5.21	0.19
RENEW_BHACHAU	5.12	0.19
ALFANAR_BHUI	5.12	0.19
ARINSUM_RUMS	5.07	0.19
ESPL_RADHANESDA	5.03	0.18
ACME_RUMS	5.03	0.18
CLEANSPL_SLR	4.99	0.18
MAHINDRA_RUMS	4.93	0.18
AVAADASN_SLR	4.82	0.18
DD&DNH	4.79	0.18
AZURE41_SLR	4.76	0.17
ARERJL_SLR	4.55	0.17
AZURE_SLR	4.51	0.17
AVIKIRAN	4.29	0.16
SBG_PVGD	4.26	0.16
BRBCL.NABINAGAR	4.24	0.16
DB POWER	4.15	0.15
MEGHALAYA	4.10	0.15
LANKO_AMK	4.06	0.15
RENEW_SLR_BKN	3.98	0.15
RENEW_SR_SLR	3.80	0.14
AYANA_RP1	3.78	0.14
JINDAL POWER	3.59	0.13
MTPS II	3.52	0.13
NTPC_ANTP	3.40	0.12
SESPL	3.37	0.12
BARC	3.24	0.12
KOTESHWAR	3.19	0.12
ARUNACHAL PRADESH	3.15	0.12
NTPC STATIONS-NER	3.00	0.11
BALCO	2.95	0.11
ACME_HEERGARH	2.85	0.10
NAPP	2.85	0.10
AZURE34_SLR	2.84	0.10
NAGALAND	2.82	0.10
TASHIDENG HEP	2.78	0.10
MANIPUR	2.73	0.10
RAIL	2.70	0.10
SKRPL	2.67	0.10
TPREL_RADHANESDA	2.62	0.10
SIKKIM	2.56	0.09
SPRING_PUGALUR	2.48	0.09
JHABUA POWER_MP	2.30	0.08
JINDAL STAGE-II	2.27	0.08
GIPCL_RADHANESDA	2.21	0.08
FORTUM1_PVGD	2.17	0.08
NSPCL	2.09	0.08
TATA_PVGD	2.05	0.08
CGPL	2.00	0.07
SPRNG_NPKUNTA	1.99	0.07
AYANA_NPKUNTA	1.87	0.07
NETCL VALLUR	1.87	0.07
TATA_ANTP	1.84	0.07
ADY3_PVGD	1.83	0.07
ADY6_PVGD	1.83	0.07
RAP B	1.66	0.06
DIKCHU HEP	1.64	0.06

KSK MAHANADI	1.63	0.06
ADY1_PVGD	1.59	0.06
ADY2_PVGD	1.59	0.06
ADY13_PVGD	1.59	0.06
ADY10_PVGD	1.59	0.06
OSTRO Hiriyur	1.53	0.06
RANGANADI HEP	1.43	0.05
ONGC PALATANA	1.37	0.05
RENEW_SLR	1.31	0.05
THERMAL POWERTECH	1.23	0.05
EMCO	1.22	0.04
CHUZACHEN HEP	1.21	0.04
ABSP_ANTP	1.21	0.04
RPREL	1.19	0.04
FRV_NPK	1.18	0.04
AKSP_ANTP	1.18	0.04
PARE HEP	1.15	0.04
GSECL_Radhansda	1.14	0.04
AHSP_ANTP	1.13	0.04
TEESTA STG3	1.12	0.04
FRV_ANTP	1.09	0.04
RANGIT HEP	1.09	0.04
SKS POWER	1.09	0.04
RONGNICHU HEP	1.08	0.04
ASEJTL_SLR	1.03	0.04
SAINJ HEP	1.00	0.04
FORTUM2_PVGD	0.99	0.04
AZURE_ANTP	0.97	0.04
NEP	0.97	0.04
AVAADA1_PVGD	0.88	0.03
ADHUNIK POWER LTD	0.77	0.03
PARAM_PVGD	0.77	0.03
POWERICA	0.76	0.03
SEMBCORP	0.74	0.03
COASTGEN	0.72	0.03
TRN ENERGY	0.64	0.02
AZURE_PVGD	0.58	0.02
AVAADA2_PVGD	0.58	0.02
NTPL	0.57	0.02
GRT_JPL	0.55	0.02
GMR KAMALANGA	0.53	0.02
SHREE CEMENT	0.48	0.02
RGPPL	0.46	0.02
RSTPS_FSPP	0.39	0.01
SORANG HEP	0.39	0.01
DOYANG HEP	0.37	0.01
BANGLADESH	0.36	0.01
LOKTAK	0.28	0.01
RAP C	0.27	0.01
KREDL_PVGD	0.26	0.01
AKS_PVGD	0.26	0.01
DHARIWAL POWER	0.26	0.01
ARS_PVGD	0.26	0.01
RENEW_PVGD	0.25	0.01
YARROW_PVGD	0.24	0.01
SINGOLI BHATWARI HEP	0.18	0.01
NFF	0.16	0.01
LANCO BUDHIL	0.12	0.005
HVDC RAIGARH	0.11	0.004
HVDC CHAMPA	0.11	0.004
HVDC PUS	0.09	0.003
HVDC ALPD	0.07	0.002
DAGACHU	0.04	0.001
IL&FS	0.03	0.001
TALA HEP	0.03	0.001
DCPP	0.01	0.0003
VINDHYACHAL HVDC	0.01	0.0002
BHADRAVATHI HVDC	0.001	0.00005
Total	2728.01	100.00
Volume Exported by top 5 Regional Entities	694.82	25.47

Table-23: VOLUME OF ELECTRICITY OVER DRAWAL (IMPORTED) THROUGH DSM, AUGUST 2022

Name of the Entity	Volume of Over drawal (MUs)	% of Volume
TALA HEP	166.50	6.16
NTPC STATIONS-WR	155.11	5.74
NTPC STATIONS-NR	131.96	4.89
HARYANA	108.77	4.03
UTTAR PRADESH	107.03	3.96
MAHARASHTRA	94.15	3.49
RAJASTHAN	93.34	3.46
NTPC STATIONS-ER	84.46	3.13
GUJARAT	78.18	2.89
TAMIL NADU	76.48	2.83
ANDHRA PRADESH	70.34	2.60
TELANGANA	68.31	2.53
NTPC STATIONS-SR	66.71	2.47
KARNATAKA	49.24	1.82
MP	44.47	1.65
AHEJ4L_SOLAR	43.49	1.61
PUNJAB	43.25	1.60
CHHATTISGARH	36.92	1.37
AGEMPL BHUJ	34.77	1.29
UTTARAKHAND	31.96	1.18
J & K	31.78	1.18
NLC	31.62	1.17
ESSAR POWER	28.17	1.04
THERMAL POWERTECH	27.80	1.03
JHARKHAND	25.50	0.94
NHPC STATIONS	25.44	0.94
BIHAR	25.29	0.94
ODISHA	25.18	0.93
DAGACHU	23.73	0.88
NETCL VALLUR	23.70	0.88
SEMBCORP	23.43	0.87
DELHI	23.28	0.86
DVC	22.38	0.83
HIMACHAL PRADESH	22.22	0.82
WEST BENGAL	20.65	0.76
NPGC	17.39	0.64
GIWEL_BHUJ	15.01	0.56
AVADARJHN_SLR	14.37	0.53
ASSAM	14.15	0.52
NEPAL(NVVN)	13.77	0.51
RPREL	13.69	0.51
AHEJ3L_SOLAR	13.48	0.50
NEP	13.47	0.50
KERALA	12.72	0.47
TEESTA STG3	12.44	0.46
OSTRO	12.11	0.45
IGSTPS	11.68	0.43
AZURE43_SLR	11.24	0.42
CGPL	10.96	0.41
NTPL	10.61	0.39
AHEJ2L_SOLAR	9.34	0.35
ALFANAR_BHUJ	9.32	0.35
RENEW_BHACHAU	9.16	0.34
NJPC	9.15	0.34
AVAADASN_SLR	8.79	0.33
NTPC STATIONS-NER	8.72	0.32
RENEW_BHUJ	8.69	0.32
ORANGE_TCN	8.29	0.31
JORETHANG	8.27	0.31
SORANG HEP	8.25	0.31
MB POWER	8.21	0.30
ARUNACHAL PRADESH	7.91	0.29
IL&FS	7.81	0.29
TRIPURA	7.76	0.29
GIWEL_TCN	7.70	0.29
CLEAN_SLR	7.68	0.28
RENEWSB	7.63	0.28
BETAM_TCN	7.51	0.28
ACME_HEERGARH	7.48	0.28
GOA	7.38	0.27

TATA_GREEN	7.00	0.26
MANGDECHU HEP	6.86	0.25
RENEWURJA_SLR	6.83	0.25
DD&DNH	6.83	0.25
TATA_SLR	6.78	0.25
MAHINDRA_RUMS	6.55	0.24
AYANA_RP1	6.47	0.24
JHABUA POWER_MP	6.36	0.24
ACME_RUMS	6.31	0.23
RENEWSW_SLR	6.20	0.23
GMR KAMALANGA	6.13	0.23
RENEW_SLR_BKN	6.06	0.22
JITPL	5.99	0.22
MSUPL_BHDL2	5.97	0.22
AZURE41_SLR	5.96	0.22
ADHUNIK POWER LTD	5.95	0.22
ABC_BHDL2	5.67	0.21
RENEWJH_SLR	5.67	0.21
SIKKIM	5.64	0.21
ARINSUM_RUMS	5.51	0.20
ACME_SLR	5.51	0.20
EDEN_SLR	5.40	0.20
KARCHAM WANGTOO	5.32	0.20
MYTRAH_TCN	5.31	0.20
SBG_NPK	5.11	0.19
AVIKIRAN	5.03	0.19
SBSR_SLR	5.01	0.19
BALCO	4.99	0.18
RAIL	4.95	0.18
THAR1_SLR	4.95	0.18
BRBCL,NABINAGAR	4.87	0.18
CHANDIGARH	4.69	0.17
MTPS II	4.68	0.17
MRPL	4.58	0.17
ARERJL_SLR	4.56	0.17
CLEANSR_SLR	4.49	0.17
MEGHALAYA	4.49	0.17
SBG_PVGD	4.44	0.16
NTPC_ANTP	4.24	0.16
DB POWER	4.10	0.15
BBMB	4.07	0.15
ESPL_RADHANESDA	3.90	0.14
TEHRI	3.90	0.14
COASTGEN	3.79	0.14
PONDICHERRY	3.61	0.13
TASHIDENG HEP	3.61	0.13
NSPCL	3.41	0.13
JINDAL STAGE-II	3.41	0.13
RAP C	3.32	0.12
MAITHON POWER LTD	3.26	0.12
AZURE_MAPLE_SLR	3.26	0.12
AZURE_SLR	3.16	0.12
ACBIL	3.14	0.12
RENEW_SR_SLR	3.13	0.12
SPRING_PUGALUR	3.02	0.11
JINDAL POWER	2.95	0.11
BANGLADESH	2.77	0.10
SKRPL	2.75	0.10
NAPP	2.74	0.10
RGPPL	2.73	0.10
AZURE34_SLR	2.66	0.10
SKS POWER	2.53	0.09
GIPCL_RADHANESDA	2.50	0.09
RKM POWER	2.46	0.09
TPREL_RADHANESDA	2.42	0.09
RAMPUR HEP	2.29	0.08
MANIPUR	2.25	0.08
SINGOLI BHATWARI HEP	2.21	0.08
RAP B	2.11	0.08
KAPP 3&4	2.01	0.07
LANCO BUDHIL	1.98	0.07
EMCO	1.97	0.07
CHUZACHEN HEP	1.97	0.07

TATA_ANTP	1.86	0.07
AD HYDRO	1.77	0.07
RSTPS_FSPP	1.72	0.06
TATA_PVGD	1.69	0.06
SHREE CEMENT	1.68	0.06
OSTRO Hiriyur	1.59	0.06
JAYPEE NIGRIE	1.59	0.06
POWERICA	1.56	0.06
ASEJTL_SLR	1.55	0.06
KOTESHWAR	1.52	0.06
FORTUM1_PVGD	1.49	0.06
RANGANADI HEP	1.40	0.05
RENEW_SLR	1.38	0.05
LANKO_AMK	1.37	0.05
DIKCHU HEP	1.34	0.05
ADY1_PVGD	1.29	0.05
ADY2_PVGD	1.29	0.05
ADY13_PVGD	1.29	0.05
ADY10_PVGD	1.29	0.05
TRN ENERGY	1.24	0.05
FORTUM2_PVGD	1.20	0.04
DHARIWAL POWER	1.17	0.04
NEEPCO STATIONS	1.16	0.04
KSK MAHANADI	1.15	0.04
ADY3_PVGD	1.06	0.04
ADY6_PVGD	1.06	0.04
SASAN UMPP	1.02	0.04
DGEN MEGA POWER	1.00	0.04
RONGNICHU HEP	0.96	0.04
NAGALAND	0.92	0.03
FRV_NPK	0.87	0.03
AVAADA2_PVGD	0.85	0.03
FRV_ANTP	0.83	0.03
AVAADA1_PVGD	0.79	0.03
AZURE_ANTP	0.78	0.03
AHSP_ANTP	0.76	0.03
ABSP_ANTP	0.76	0.03
ONGC PALATANA	0.75	0.03
AKSP_ANTP	0.74	0.03
SAINJ HEP	0.67	0.02
AYANA_NPKUNTA	0.67	0.02
PARAM_PVGD	0.63	0.02
SPRNG_NPKUNTA	0.59	0.02
GRT_JPL	0.57	0.02
RANGIT HEP	0.56	0.02
SIMHAPURI	0.53	0.02
AZURE_PVGD	0.49	0.02
LANKO KONDAPALLI	0.49	0.02
MEENAKSHI	0.48	0.02
LOKTAK	0.44	0.02
GSECL_Radhanesda	0.36	0.01
PARE HEP	0.35	0.01
RENEW_PVGD	0.31	0.01
MIZORAM	0.30	0.01
YARROW_PVGD	0.24	0.01
AKS_PVGD	0.22	0.01
ARS_PVGD	0.20	0.01
DOYANG HEP	0.20	0.01
KREDL_PVGD	0.19	0.01
BHADRAVATHI HVDC	0.14	0.01
NFF	0.09	0.003
HVDC ALPD	0.07	0.003
DCPP	0.06	0.002
HVDC RAIGARH	0.04	0.002
SESPL	0.03	0.001
KURICHU HEP	0.02	0.001
TEESTA HEP	0.02	0.001
HVDC CHAMPA	0.02	0.001
HVDC PUS	0.01	0.0004
VINDHYACHAL HVDC	0.004	0.0002
TOTAL	2701.21	100.00
Volume Imported by top 5 Regional Entities	669.37	24.78

Table-24: TOTAL VOLUME OF NET SHORT-TERM TRANSACTIONS OF ELECTRICITY (REGIONAL ENTITY-WISE), AUGUST 2022		
S. No.	Name of the Entity	Total volume of net short-term transactions of electricity*
1	PUNJAB	2274.76
2	HARYANA	1348.31
3	UTTAR PRADESH	1040.63
4	MAHARASHTRA	1014.25
5	DELHI	831.16
6	ODISHA	794.03
7	GUJARAT	560.60
8	WEST BENGAL	540.07
9	AMPS Hazira	378.31
10	TELANGANA	274.19
11	ASSAM	243.84
12	BALCO	199.17
13	DD&DNH	191.16
14	JHARKHAND	177.42
15	TALA HEP	166.47
16	BANGLADESH	150.56
17	ANDHRA PRADESH	139.14
18	NTPC STATIONS-NR	74.12
19	CHHATTISGARH	70.93
20	NTPC STATIONS-WR	53.73
21	RAIL	47.93
22	NTPC STATIONS-ER	45.43
23	GOA	36.91
24	NTPC STATIONS-SR	32.99
25	AGEMPL BHUJ	27.64
26	NEP	23.07
27	NETCL VALLUR	21.83
28	NCR ALLAHABAD	14.00
29	PONDICHERRY	13.06
30	NTPL	10.04
31	AVADARJHN_SLR	6.55
32	NPGC	6.41
33	IL&FS	6.08
34	MSUPL_BHDL2	5.97
35	EDEN_SLR	5.40
36	NTPC STATIONS-NER	5.06
37	ALFANAR_BHUJ	4.20
38	RENEW_BHACHAU	4.04
39	AVAADASN_SLR	3.97
40	GIWEL_BHUJ	3.61
41	ACBIL	3.14
42	COASTGEN	3.07
43	RAP C	3.05
44	AYANA_RP1	2.68
45	RGPPL	2.26
46	IGSTPS	2.18
47	RENEW_SLR_BKN	2.08
48	CLEAN_SLR	1.98
49	RENEW_BHUJ	1.90
50	BETAM_TCN	1.82
51	MAHINDRA_RUMS	1.61
52	RSTPS_FSPP	1.33
53	NSPCL	1.32
54	ACME_RUMS	1.28
55	ORANGE_TCN	1.22
56	RENEWURJA_SLR	1.20
57	AZURE41_SLR	1.19
58	MTPS II	1.16
59	DGEN MEGA POWER	1.00
60	TRIPURA	0.85
61	NTPC_ANTP	0.84
62	DHARIWAL POWER	0.81

63	POWERICA	0.80
64	RENEWSB	0.79
65	AVIKIRAN	0.74
66	BRBCL,NABINAGAR	0.63
67	SPRING_PUGALUR	0.54
68	SIMHAPURI	0.53
69	ASEJTL_SLR	0.52
70	LANKO KONDAPALLI	0.49
71	MEENAKSHI	0.48
72	RAP B	0.45
73	ARINSUM_RUMS	0.45
74	ACME_SLR	0.30
75	GIPCL_RADHANESDA	0.29
76	AVAADA2_PVGD	0.27
77	FORTUM2_PVGD	0.22
78	SBG_PVGD	0.18
79	LOKTAK	0.16
80	BHADRAVATHI HVDC	0.14
81	SKRPL	0.08
82	RENEW_SLR	0.07
83	OSTRO Hiriyur	0.06
84	DCPP	0.05
85	RENEW_PVGD	0.05
86	TATA_ANTP	0.02
87	ARERJL_SLR	0.02
88	GRT_JPL	0.01
89	HVDC ALPD	0.004
90	YARROW_PVGD	0.001
91	VINDHYACHAL HVDC	-0.001
92	RANGANADI HEP	-0.03
93	NJPC	-0.03
94	AKS_PVGD	-0.04
95	ARS_PVGD	-0.06
96	NFF	-0.07
97	HVDC RAIGARH	-0.07
98	KREDL_PVGD	-0.07
99	HVDC PUS	-0.08
100	AVAADA1_PVGD	-0.09
101	AZURE_PVGD	-0.09
102	HVDC CHAMPA	-0.09
103	NAPP	-0.11
104	RONGNICHU HEP	-0.12
105	PARAM_PVGD	-0.13
106	DOYANG HEP	-0.17
107	AZURE34_SLR	-0.18
108	AZURE_ANTP	-0.19
109	TPREL_RADHANESDA	-0.21
110	FRV_ANTP	-0.26
111	ADY1_PVGD	-0.31
112	ADY2_PVGD	-0.31
113	ADY13_PVGD	-0.31
114	ADY10_PVGD	-0.31
115	FRV_NPK	-0.31
116	TATA_PVGD	-0.36
117	AHSP_ANTP	-0.37
118	GIWEL_TCN	-0.38
119	SBG_NPK	-0.42
120	AKSP_ANTP	-0.44
121	ABSP_ANTP	-0.45
122	KSK MAHANADI	-0.48
123	RANGIT HEP	-0.52
124	FORTUM1_PVGD	-0.68
125	ADY3_PVGD	-0.77
126	ADY6_PVGD	-0.77
127	GSECL_Radhanesda	-0.78
128	PARE HEP	-0.80

129	ESPL_RADHANESDA	-1.13
130	MRPL	-1.15
131	AYANA_NPKUNTA	-1.20
132	AZURE_SLR	-1.35
133	SBSR_SLR	-1.38
134	SPRNG_NPKUNTA	-1.40
135	AZURE43_SLR	-1.62
136	KOTESHWAR	-1.67
137	MYTRAH_TCN	-2.29
138	REGL	-2.92
139	BARC	-3.24
140	SESPL	-3.33
141	GMR KAMALANGA	-3.91
142	LANCO BUDHIL	-4.66
143	AZURE_MAPLE_SLR	-4.86
144	MAITHON POWER LTD	-5.76
145	RAMPUR HEP	-5.77
146	TEHRI	-5.77
147	EMCO	-6.75
148	LANKO_AMK	-7.89
149	SHREE CEMENT	-8.29
150	TEESTA HEP	-9.29
151	ADANI GREEN	-9.90
152	CGPL	-10.27
153	CHUZACHEN HEP	-10.52
154	RENEWSW_SLR	-10.65
155	BBMB	-10.82
156	OSTRO	-10.89
157	MANGDECHU HEP	-12.65
158	ADANIHB_SLR	-14.91
159	MANIPUR	-16.78
160	AHEJ2L_WIND	-17.03
161	SIKKIM	-17.72
162	NAGALAND	-18.33
163	RENEWJH_SLR	-18.91
164	AHEJ3L_WIND	-19.49
165	TRN ENERGY	-19.51
166	RENEW_SR_SLR	-25.55
167	ONGC PALATANA	-27.11
168	KURICHU HEP	-27.49
169	TATA_SLR	-28.12
170	CHANDIGARH	-28.75
171	TATA_GREEN	-29.79
172	THAR1_SLR	-32.30
173	UTTARAKHAND	-32.88
174	KOLYAT_SLR	-32.89
175	ADANI_WIND	-33.08
176	JHABUA POWER_MP	-33.60
177	NLC	-34.00
178	THERMAL POWERTECH	-34.07
179	MIZORAM	-34.93
180	DVC	-38.50
181	SORANG HEP	-38.73
182	CLEANSR_SLR	-41.72
183	ACME_HEERGARH	-42.81
184	AHEJ3L_SOLAR	-46.63
185	AHEJ2L_SOLAR	-47.49
186	ABC_BHDL2	-47.98
187	SASAN UMPP	-53.18
188	RKM POWER	-56.40
189	MEGHALAYA	-60.30
190	ARUNACHAL PRADESH	-64.52
191	TAMIL NADU	-65.53
192	DAGACHU	-67.66
193	JORETHANG	-69.35
194	SINGOLI BHATWARI HEP	-72.24

195	DB POWER	-75.95
196	DIKCHU HEP	-77.09
197	TASHIDENG HEP	-77.61
198	SAINJ HEP	-79.07
199	AHEJ4L_WIND	-84.35
200	ESSAR POWER	-92.21
201	NHPC STATIONS	-94.45
202	AHEJ4L_SOLAR	-95.61
203	SKS POWER	-101.42
204	KAPP 3&4	-113.89
205	RAJASTHAN	-114.20
206	KARCHAM WANGTOO	-127.08
207	JINDAL STAGE-II	-129.01
208	AD HYDRO	-137.61
209	JINDAL POWER	-139.88
210	MB POWER	-155.59
211	CHUKHA HEP	-166.68
212	BIHAR	-203.89
213	JAYPEE NIGRIE	-210.26
214	ADHUNIK POWER LTD	-225.24
215	NEPAL(NVVN)	-237.81
216	NEEPCO STATIONS	-255.77
217	JITPL	-319.86
218	SEMBCORP	-349.68
219	RPREL	-351.11
220	J & K	-402.75
221	KERALA	-526.74
222	KARNATAKA	-548.11
223	TEESTA STG3	-711.96
224	HIMACHAL PRADESH	-1303.08
225	MP	-1849.50
* Total volume of net short-term transactions of electricity includes net of transactions of electricity through bilateral, power exchange and DSM		
(-) indicates sale and (+) indicates purchase		

Table-25: DETAILS OF CONGESTION IN POWER EXCHANGES, AUGUST 2022										
	Details of Congestion	Day Ahead Market			Green Day Ahead Market			Real Time Market		
		IEX	PXIL	HPX	IEX	PXIL	HPX	IEX	PXIL	HPX
A	Unconstrained Cleared Volume (MUs)	3528.70	10.12	0.00	320.50	0.00	0.00	2265.60	0.15	0.00
B	Actual Cleared Volume and hence scheduled (MUs)	3528.70	10.12	0.00	320.50	0.00	0.00	2265.25	0.15	0.00
C	Volume of electricity that could not be cleared and hence not scheduled because of congestion (MUs) *	0.00	0.00	0.00	0.00	0.00	0.00	0.35	0.00	0.00
D	Volume of electricity that could not be cleared and hence not scheduled because of reasons other than congestion (MUs)	0.00	0.00	0.00	0.00	0.00	0.00	0.00	0.00	0.00
E	Volume of electricity that could not be cleared as % to Unconstrained Cleared Volume	0.00%	0.00%	0.00%	0.00%	0.00%	0.00%	0.02%	0.00%	0.00%
F	Percentage of the time congestion occurred during the month (Number of hours congestion occurred/ Total number of hours in the month)	0.00%	0.00%	0.00%	0.00%	0.00%	0.00%	0.50%	0.00%	0.00%
G	Congestion occurrence (%) time block wise									
	0.00 - 6.00 hours	0.00%	0.00%	0.00%	0.00%	0.00%	0.00%	40.00%	0.00%	0.00%
	6.00 - 12.00 hours	0.00%	0.00%	0.00%	0.00%	0.00%	0.00%	6.67%	0.00%	0.00%
	12.00 - 18.00 hours	0.00%	0.00%	0.00%	0.00%	0.00%	0.00%	53.33%	0.00%	0.00%
	18.00 - 24.00 hours	0.00%	0.00%	0.00%	0.00%	0.00%	0.00%	0.00%	0.00%	0.00%
* This power would have been scheduled had there been no congestion										
Source: IEX, PXIL, HPX & NLDC										

**Table-26: VOLUME OF SHORT-TERM TRANSACTIONS OF ELECTRICITY IN INDIA (DAY-WISE) (MUs),
AUGUST 2022**

Date	Bilateral		Day Ahead Market [#]			Green Day Ahead Market [#]			Real Time Market [#]			Deviation Settlement (Over Drawl + Under Generation)	Total Electricity Generation (MU) as given at CEA Website*
	Through Traders and PXs**	Direct	IEX	PXIL	HPX	IEX	PXIL	HPX	IEX	PXIL	HPX		
1-Aug-22	150.62	99.07	136.05	0.64	0.00	9.73	0.00	0.00	65.72	0.00	0.00	84.58	3832.40
2-Aug-22	159.07	100.90	122.44	0.38	0.00	9.73	0.00	0.00	62.67	0.00	0.00	78.97	3992.47
3-Aug-22	170.56	97.13	129.44	0.56	0.00	6.62	0.00	0.00	65.74	0.00	0.00	75.53	4145.45
4-Aug-22	174.76	97.27	127.77	0.73	0.00	6.99	0.00	0.00	52.11	0.00	0.00	84.62	4120.25
5-Aug-22	178.90	95.96	118.04	1.88	0.00	6.12	0.00	0.00	58.74	0.00	0.00	87.45	3966.13
6-Aug-22	169.37	93.41	120.10	0.49	0.00	8.18	0.00	0.00	67.24	0.00	0.00	88.20	3866.87
7-Aug-22	156.43	96.79	95.91	0.00	0.00	14.56	0.00	0.00	75.16	0.00	0.00	94.96	3663.44
8-Aug-22	153.68	97.93	90.73	0.18	0.00	18.35	0.00	0.00	63.23	0.00	0.00	84.60	3766.40
9-Aug-22	154.82	100.51	88.97	0.17	0.00	22.92	0.00	0.00	84.96	0.00	0.00	88.75	3757.45
10-Aug-22	162.10	99.97	95.73	0.07	0.00	16.94	0.00	0.00	88.53	0.00	0.00	88.85	3735.60
11-Aug-22	152.93	99.64	87.60	0.22	0.00	16.39	0.00	0.00	76.20	0.00	0.00	105.29	3540.63
12-Aug-22	151.74	101.57	102.95	0.00	0.00	15.30	0.00	0.00	79.83	0.00	0.00	94.37	3701.52
13-Aug-22	152.33	99.24	101.89	0.18	0.00	15.39	0.00	0.00	85.19	0.00	0.00	89.36	3843.00
14-Aug-22	160.59	92.88	101.91	0.03	0.00	8.26	0.00	0.00	73.65	0.00	0.00	90.14	3613.07
15-Aug-22	143.78	89.71	105.92	0.13	0.00	10.35	0.00	0.00	67.84	0.00	0.00	102.80	3420.50
16-Aug-22	144.36	91.83	116.82	0.14	0.00	9.90	0.00	0.00	104.18	0.00	0.00	92.89	3687.12
17-Aug-22	144.89	98.87	114.81	0.05	0.00	9.93	0.00	0.00	83.10	0.01	0.00	87.90	3915.63
18-Aug-22	159.44	103.84	120.76	0.12	0.00	8.96	0.00	0.00	76.80	0.01	0.00	89.49	3988.74
19-Aug-22	131.20	52.60	67.25	0.04	0.00	7.46	0.00	0.00	53.45	0.01	0.00	91.54	3990.53
20-Aug-22	135.64	54.66	88.89	0.02	0.00	7.99	0.00	0.00	61.54	0.02	0.00	86.43	3890.42
21-Aug-22	148.86	105.11	92.76	0.00	0.00	8.77	0.00	0.00	66.80	0.04	0.00	87.52	3751.18
22-Aug-22	151.04	111.17	92.90	0.04	0.00	8.15	0.00	0.00	94.48	0.03	0.00	85.07	3878.19
23-Aug-22	149.17	108.97	120.88	0.05	0.00	7.07	0.00	0.00	76.95	0.00	0.00	84.05	3923.64
24-Aug-22	147.23	107.95	122.14	0.10	0.00	8.31	0.00	0.00	62.62	0.00	0.00	87.16	3978.17
25-Aug-22	151.20	108.63	138.00	0.13	0.00	8.49	0.00	0.00	59.02	0.00	0.00	88.28	4061.45
26-Aug-22	154.72	107.03	132.94	0.40	0.00	7.64	0.00	0.00	70.83	0.00	0.00	81.49	4228.08
27-Aug-22	156.21	106.99	133.25	0.81	0.00	6.96	0.00	0.00	81.44	0.01	0.00	79.83	4163.57
28-Aug-22	146.86	105.86	127.12	0.37	0.00	8.02	0.00	0.00	77.43	0.01	0.00	80.72	4057.99
29-Aug-22	164.51	104.32	129.97	0.54	0.00	7.98	0.00	0.00	79.26	0.01	0.00	85.90	4296.61
30-Aug-22	170.29	105.13	147.49	0.77	0.00	8.27	0.00	0.00	78.30	0.00	0.00	84.79	4390.06
31-Aug-22	173.54	107.08	157.30	0.89	0.00	10.77	0.00	0.00	72.26	0.00	0.00	83.05	4323.06
Total	4820.83	3042.02	3528.70	10.12	0.00	320.50	0.00	0.00	2265.25	0.15	0.00	2714.61	121489.62

Source: NLDC

* Gross Electricity Generation excluding electricity generation from renewables and captive power plants.

** The volume of bilateral through PXs represents the volume through term-ahead contracts.

Scheduled volume of all the bid areas.

**Table-27(a): PRICE OF DAY AHEAD TRANSACTIONS OF ELECTRICITY (DAY-WISE) (₹/kWh),
AUGUST 2022**

Market Segment	Day ahead market of IEX			Day ahead market of PXIL			Day ahead market of HPX		
Date	Minimum ACP	Maximum ACP	Weighted Average Price*	Minimum ACP	Maximum ACP	Weighted Average Price*	Minimum ACP	Maximum ACP	Weighted Average Price*
1-Aug-22	3.11	12.00	5.09	5.12	12.00	8.73	-	-	-
2-Aug-22	3.23	12.00	5.56	5.62	10.50	8.73	-	-	-
3-Aug-22	3.25	12.00	6.08	4.10	12.00	9.18	-	-	-
4-Aug-22	4.71	12.00	7.27	5.50	12.00	8.40	-	-	-
5-Aug-22	3.80	12.00	6.99	5.50	12.00	8.18	-	-	-
6-Aug-22	3.45	12.00	6.25	4.10	12.00	7.46	-	-	-
7-Aug-22	1.56	6.85	4.19	-	-	-	-	-	-
8-Aug-22	1.50	9.00	4.85	6.17	6.17	6.17	-	-	-
9-Aug-22	1.50	7.21	3.73	5.00	6.17	5.92	-	-	-
10-Aug-22	1.50	7.40	3.73	4.90	6.17	5.46	-	-	-
11-Aug-22	1.50	6.53	3.22	3.00	3.00	3.00	-	-	-
12-Aug-22	1.50	7.40	3.23	-	-	-	-	-	-
13-Aug-22	1.84	7.00	3.66	3.80	5.50	3.93	-	-	-
14-Aug-22	1.31	6.40	3.77	3.80	6.30	4.18	-	-	-
15-Aug-22	1.31	5.97	3.36	2.90	6.30	4.43	-	-	-
16-Aug-22	2.11	12.00	5.52	2.58	12.00	5.77	-	-	-
17-Aug-22	2.72	12.00	5.50	2.58	5.70	3.95	-	-	-
18-Aug-22	2.18	12.00	5.12	2.91	5.70	3.96	-	-	-
19-Aug-22	3.45	7.40	4.81	5.16	5.16	5.16	-	-	-
20-Aug-22	3.16	12.00	5.68	7.00	8.00	7.77	-	-	-
21-Aug-22	1.50	6.50	3.50	6.05	6.05	6.05	-	-	-
22-Aug-22	3.00	10.86	4.91	6.05	6.05	6.05	-	-	-
23-Aug-22	3.05	8.50	4.44	5.50	6.05	5.97	-	-	-
24-Aug-22	3.08	9.00	4.39	4.44	7.78	6.38	-	-	-
25-Aug-22	3.36	12.00	5.71	5.85	10.00	7.55	-	-	-
26-Aug-22	3.53	12.00	6.84	5.12	7.99	7.47	-	-	-
27-Aug-22	3.60	12.00	7.43	6.01	11.33	8.34	-	-	-
28-Aug-22	3.05	12.00	6.33	5.99	9.00	6.74	-	-	-
29-Aug-22	3.64	12.00	7.31	5.50	10.00	6.83	-	-	-
30-Aug-22	4.02	12.00	7.28	3.90	12.00	6.55	-	-	-
31-Aug-22	3.86	12.00	7.30	3.90	6.99	5.78	-	-	-
	1.31#	12.00#	5.43	2.58#	12.00#	7.29	-	-	-

Source: IEX, PXIL and HPX

* Weighted average price computed based on Area Clearing Volume (ACV) and Area Clearing Price (ACP) for each hour of the day. Here, ACV and ACP represent the scheduled volume and weighted average price of all the bid areas of power exchanges.

Maximum/Minimum in the month

**Table-27(b): PRICE OF GREEN DAY AHEAD TRANSACTIONS OF ELECTRICITY (DAY-WISE) (₹/kWh),
AUGUST 2022**

Market Segment	Green Day ahead market of IEX			Green Day ahead market of PXIL			Green Day ahead market of HPX		
Date	Minimum ACP	Maximum ACP	Weighted Average Price*	Minimum ACP	Maximum ACP	Weighted Average Price*	Minimum ACP	Maximum ACP	Weighted Average Price*
1-Aug-22	4.00	12.00	6.33	-	-	-	-	-	-
2-Aug-22	4.00	12.00	5.48	-	-	-	-	-	-
3-Aug-22	4.00	12.00	5.31	-	-	-	-	-	-
4-Aug-22	4.00	12.00	5.51	-	-	-	-	-	-
5-Aug-22	5.00	12.00	6.66	-	-	-	-	-	-
6-Aug-22	4.20	12.00	5.67	-	-	-	-	-	-
7-Aug-22	3.00	8.00	4.35	-	-	-	-	-	-
8-Aug-22	3.21	12.00	4.40	-	-	-	-	-	-
9-Aug-22	3.36	6.34	4.13	-	-	-	-	-	-
10-Aug-22	3.35	6.34	4.36	-	-	-	-	-	-
11-Aug-22	2.97	6.50	3.77	-	-	-	-	-	-
12-Aug-22	2.94	6.10	3.82	-	-	-	-	-	-
13-Aug-22	2.92	7.00	3.93	-	-	-	-	-	-
14-Aug-22	2.87	6.50	4.10	-	-	-	-	-	-
15-Aug-22	2.80	6.60	3.80	-	-	-	-	-	-
16-Aug-22	3.00	6.50	4.37	-	-	-	-	-	-
17-Aug-22	3.94	8.00	5.43	-	-	-	-	-	-
18-Aug-22	3.91	12.00	5.44	-	-	-	-	-	-
19-Aug-22	4.00	9.00	5.60	-	-	-	-	-	-
20-Aug-22	3.50	12.00	5.80	-	-	-	-	-	-
21-Aug-22	3.00	12.00	5.00	-	-	-	-	-	-
22-Aug-22	3.80	12.00	5.76	-	-	-	-	-	-
23-Aug-22	4.00	12.00	6.01	-	-	-	-	-	-
24-Aug-22	3.50	12.00	5.84	-	-	-	-	-	-
25-Aug-22	4.50	12.00	6.09	-	-	-	-	-	-
26-Aug-22	4.50	12.00	6.60	-	-	-	-	-	-
27-Aug-22	4.50	12.00	6.77	-	-	-	-	-	-
28-Aug-22	4.90	12.00	8.16	-	-	-	-	-	-
29-Aug-22	5.00	12.00	7.46	-	-	-	-	-	-
30-Aug-22	5.00	12.00	7.42	-	-	-	-	-	-
31-Aug-22	4.25	12.00	6.89	-	-	-	-	-	-
	2.80[#]	12.00[#]	5.20	-	-	-	-	-	-

Source: IEX, PXIL and HPX

* Weighted average price computed based on Area Clearing Volume (ACV) and Area Clearing Price (ACP) for each hour of the day. Here, ACV and ACP represent the scheduled volume and weighted average price of all the bid areas of power exchanges.

Maximum/Minimum in the month

Table-27(c): PRICE OF REAL TIME TRANSACTIONS AND DSM (DAY-WISE) (₹/kWh), AUGUST 2022

Market Segment	Real Time market of IEX			Real Time market of PXIL			Real Time market of HPX			Under Drawl/Over Drawl from the Grid (DSM)		
	Mini-mum ACP	Maxi-mum ACP	Weighted Average Price*	Mini-mum ACP	Maxi-mum ACP	Weighted Average Price*	Mini-mum ACP	Maxi-mum ACP	Weighted Average Price*	All India Grid		
Date	Mini-mum ACP	Maxi-mum ACP	Weighted Average Price*	Mini-mum ACP	Maxi-mum ACP	Weighted Average Price*	Mini-mum ACP	Maxi-mum ACP	Weighted Average Price*	Mini-mum Price	Maxi-mum Price	Average Price**
1-Aug-22	1.62	7.00	3.90	-	-	-	-	-	-	0.00	7.65	3.95
2-Aug-22	3.00	12.00	6.40	-	-	-	-	-	-	0.00	8.00	5.31
3-Aug-22	4.35	12.00	6.99	-	-	-	-	-	-	0.00	8.00	5.87
4-Aug-22	3.45	12.00	7.13	-	-	-	-	-	-	0.00	8.00	6.05
5-Aug-22	3.01	8.00	4.97	-	-	-	-	-	-	0.00	7.44	5.42
6-Aug-22	1.83	12.00	4.73	-	-	-	-	-	-	0.00	8.00	4.76
7-Aug-22	0.30	6.03	2.84	-	-	-	-	-	-	0.00	8.00	3.40
8-Aug-22	1.40	9.00	3.60	-	-	-	-	-	-	0.00	7.78	3.77
9-Aug-22	0.48	8.52	3.95	-	-	-	-	-	-	0.00	7.46	3.02
10-Aug-22	1.20	8.00	3.38	-	-	-	-	-	-	0.00	8.00	3.55
11-Aug-22	0.25	4.50	2.39	-	-	-	-	-	-	0.00	7.71	2.52
12-Aug-22	1.00	10.00	3.87	-	-	-	-	-	-	0.00	8.00	3.91
13-Aug-22	1.59	9.87	4.32	-	-	-	-	-	-	0.00	8.00	4.36
14-Aug-22	1.30	5.50	2.93	-	-	-	-	-	-	0.00	8.00	3.16
15-Aug-22	0.08	6.51	3.11	-	-	-	-	-	-	0.00	8.00	2.70
16-Aug-22	1.24	12.00	3.83	3.20	3.30	3.25	-	-	-	0.00	8.00	4.06
17-Aug-22	1.79	12.00	4.40	3.20	3.20	3.20	-	-	-	0.00	8.00	4.92
18-Aug-22	2.09	12.00	5.85	3.20	3.20	3.20	-	-	-	0.00	8.00	4.24
19-Aug-22	1.01	12.00	5.07	3.20	3.20	3.20	-	-	-	0.00	6.52	2.92
20-Aug-22	1.50	6.25	3.84	3.20	3.20	3.20	-	-	-	0.00	8.00	5.02
21-Aug-22	1.58	6.17	3.07	3.20	3.20	3.20	-	-	-	0.00	8.00	3.24
22-Aug-22	1.63	6.10	3.88	3.20	3.20	3.20	-	-	-	0.00	7.15	3.66
23-Aug-22	1.45	9.00	3.97	-	-	-	-	-	-	0.00	8.00	3.67
24-Aug-22	3.00	12.00	5.97	-	-	-	-	-	-	0.00	8.00	4.50
25-Aug-22	2.10	12.00	5.95	-	-	-	-	-	-	0.00	8.00	5.58
26-Aug-22	3.04	12.00	7.55	-	-	-	-	-	-	0.00	8.00	6.37
27-Aug-22	2.96	12.00	7.54	3.20	3.20	3.20	-	-	-	0.00	8.00	6.88
28-Aug-22	2.46	12.00	5.28	3.20	3.20	3.20	-	-	-	0.00	8.00	5.52
29-Aug-22	2.90	12.00	7.27	3.20	3.20	3.20	-	-	-	2.95	8.00	7.41
30-Aug-22	2.18	12.00	7.22	-	-	-	-	-	-	0.00	8.00	6.36
31-Aug-22	3.79	12.00	8.66	-	-	-	-	-	-	0.00	8.00	6.36
	0.08#	12.00#	4.90	3.20#	3.30#	3.20	-	-	-	0.00#	8.00#	4.60

Source: Data on price of PX transactions from IEX, PXIL and HPX and data on DSM Price from NLDC.

* Weighted average price computed based on Area Clearing Volume (ACV) and Area Clearing Price (ACP) for each hour of the day. Here, ACV and ACP represent the scheduled volume and weighted average price of all the bid areas of power exchanges.

** Simple average price of DSM of 96 time blocks of 15 minutes each in a day. DSM price includes Ceiling DSM Rate +40% additional DSM charge.

Maximum/Minimum in the month

Table-28: VOLUME OF SHORT-TERM TRANSACTIONS OF ELECTRICITY (REGIONAL ENTITY*-WISE) (MUs), AUGUST 2022

Name of the Entity	Through Bilateral			Through Power Exchange (DAM + GDAM + RTM)			Through DSM with Regional Grid			Total Net***
	Sale	Purchase	Net**	Sale	Purchase	Net**	Import (Over Drawl)	Export (Under Drawl)	Net**	
PUNJAB	3.33	2141.99	2138.66	119.88	250.38	130.50	43.25	37.66	5.60	2274.76
HARYANA	2.91	919.79	916.88	22.59	360.70	338.11	108.77	15.45	93.32	1348.31
RAJASTHAN	152.38	71.80	-80.59	296.29	248.85	-47.45	93.34	79.50	13.83	-114.20
DELHI	0.00	884.19	884.19	180.26	135.06	-45.20	23.28	31.11	-7.83	831.16
UTTAR PRADESH	47.35	752.51	705.16	237.75	523.09	285.34	107.03	56.89	50.13	1040.63
UTTARAKHAND	33.05	10.92	-22.13	40.82	11.68	-29.14	31.96	13.58	18.38	-32.88
HIMACHAL PRADESH	1077.19	0.00	-1077.19	249.42	19.27	-230.15	22.22	17.96	4.26	-1303.08
J & K	198.28	0.00	-198.28	140.17	0.00	-140.17	31.78	96.08	-64.29	-402.75
CHANDIGARH	0.00	0.00	0.00	25.45	0.93	-24.53	4.69	8.91	-4.23	-28.75
MP	1259.08	68.87	-1190.21	712.51	142.34	-570.17	44.47	133.59	-89.12	-1849.50
MAHARASHTRA	350.88	595.51	244.63	27.51	769.46	741.95	94.15	66.48	27.67	1014.25
GUJARAT	75.91	173.88	97.97	16.11	547.91	531.80	78.18	147.34	-69.17	560.60
CHHATTISGARH	4.24	34.97	30.73	51.47	82.04	30.57	36.92	27.28	9.64	70.93
GOA	27.21	71.86	44.65	23.81	15.06	-8.75	7.38	6.37	1.01	36.91
DD&DNH	0.00	13.66	13.66	0.82	176.28	175.47	6.83	4.79	2.04	191.16
ANDHRA PRADESH	118.11	91.99	-26.12	219.28	369.35	150.07	70.34	55.15	15.20	139.14
KARNATAKA	179.60	0.17	-179.43	403.09	61.60	-341.49	49.24	76.43	-27.19	-548.11
KERALA	69.40	0.00	-69.40	442.07	15.84	-426.23	12.72	43.83	-31.11	-526.74
TAMIL NADU	210.48	11.63	-198.85	129.57	313.73	184.16	76.48	127.32	-50.84	-65.53
PONDICHERRY	0.00	18.29	18.29	0.00	0.00	0.00	3.61	8.85	-5.23	13.06
TELANGANA	91.56	289.73	198.16	416.52	483.25	66.74	68.31	59.02	9.29	274.19
WEST BENGAL	93.56	316.99	223.43	91.40	446.45	355.04	20.65	59.06	-38.41	540.07
ODISHA	0.46	595.13	594.67	95.25	327.84	232.58	25.18	58.41	-33.22	794.03
BIHAR	26.20	79.51	53.31	257.68	51.87	-205.81	25.29	76.68	-51.39	-203.89
JHARKHAND	4.86	157.89	153.04	50.21	71.34	21.13	25.50	22.24	3.26	177.42
SIKKIM	26.70	22.11	-4.58	16.51	0.30	-16.21	5.64	2.56	3.07	-17.72
DVC	105.12	0.78	-104.34	3.23	77.33	74.10	22.38	30.65	-8.26	-38.50
ARUNACHAL P	53.44	0.00	-53.44	16.61	0.76	-15.85	7.91	3.15	4.77	-64.52
ASSAM	0.00	61.49	61.49	61.11	248.76	187.65	14.15	19.44	-5.29	243.84
MANIPUR	15.37	0.00	-15.37	6.26	5.32	-0.93	2.25	2.73	-0.48	-16.78
MEGHALAYA	99.62	15.65	-83.97	1.67	24.95	23.29	4.49	4.10	0.39	-60.30
MIZORAM	0.00	0.00	0.00	28.52	0.00	-28.52	0.30	6.71	-6.41	-34.93
NAGALAND	11.55	0.00	-11.55	4.89	0.00	-4.89	0.92	2.82	-1.90	-18.33
TRIPURA	0.00	0.00	0.00	10.00	8.61	-1.39	7.76	5.52	2.24	0.85
NTPC STATIONS-NR	0.00	0.00	0.00	4.04	0.00	-4.04	131.96	53.80	78.16	74.12
NHPC STATIONS	0.00	0.00	0.00	0.00	0.00	0.00	25.44	119.89	-94.45	-94.45
NFF	0.00	0.00	0.00	0.00	0.00	0.00	0.09	0.16	-0.07	-0.07
RAIL	0.00	0.00	0.00	0.00	45.67	45.67	4.95	2.70	2.25	47.93
NEP	0.00	0.00	0.00	0.00	10.57	10.57	13.47	0.97	12.51	23.07
NAPP	0.00	0.00	0.00	0.00	0.00	0.00	2.74	2.85	-0.11	-0.11
RAP B	0.00	0.00	0.00	0.00	0.00	0.00	2.11	1.66	0.45	0.45
NJPC	0.00	0.00	0.00	0.00	0.00	0.00	9.15	9.18	-0.03	-0.03
TEHRI	0.00	0.00	0.00	0.00	0.00	0.00	3.90	9.67	-5.77	-5.77
BBMB	0.00	0.00	0.00	0.00	0.00	0.00	4.07	14.89	-10.82	-10.82
RAP C	0.00	0.00	0.00	0.00	0.00	0.00	3.32	0.27	3.05	3.05
AD HYDRO	89.70	0.00	-89.70	41.64	0.00	-41.64	1.77	8.04	-6.27	-137.61
IGSTPS	0.00	0.00	0.00	0.00	0.00	0.00	11.68	9.50	2.18	2.18
KOTESHWAR	0.00	0.00	0.00	0.00	0.00	0.00	1.52	3.19	-1.67	-1.67
KARCHAM WANGTOO	98.12	0.00	-98.12	29.01	0.84	-28.16	5.32	6.12	-0.80	-127.08
SHREE CEMENT	5.47	0.00	-5.47	4.01	0.00	-4.01	1.68	0.48	1.20	-8.29
LANCO BUDHIL	0.00	0.00	0.00	6.53	0.02	-6.51	1.98	0.12	1.86	-4.66
RAMPUR HEP	0.00	0.00	0.00	0.00	0.00	0.00	2.29	8.06	-5.77	-5.77
SORANG HEP	40.45	0.00	-40.45	6.14	0.00	-6.14	8.25	0.39	7.87	-38.73
SAINJ HEP	44.00	0.00	-44.00	35.79	1.03	-34.75	0.67	1.00	-0.32	-79.07
RENEW_SLR	0.00	0.00	0.00	0.00	0.00	0.00	1.38	1.31	0.07	0.07
AZURE_SLR	0.00	0.00	0.00	0.00	0.00	0.00	3.16	4.51	-1.35	-1.35

ACME_SLR	0.00	0.00	0.00	0.00	0.00	0.00	5.51	5.21	0.30	0.30
AZURE34_SLR	0.00	0.00	0.00	0.00	0.00	0.00	2.66	2.84	-0.18	-0.18
TATA_SLR	29.29	0.00	-29.29	0.00	0.00	0.00	6.78	5.62	1.17	-28.12
RENEW_SLR_BKN	0.00	0.00	0.00	0.00	0.00	0.00	6.06	3.98	2.08	2.08
CLEAN_SLR	0.00	0.00	0.00	0.00	0.00	0.00	7.68	5.70	1.98	1.98
ARERJL_SLR	0.00	0.00	0.00	0.00	0.00	0.00	4.56	4.55	0.02	0.02
ADANI GREEN	0.00	0.00	0.00	9.90	0.00	-9.90	0.00	0.00	0.00	-9.90
ASEJTL_SLR	0.00	0.00	0.00	0.00	0.00	0.00	1.55	1.03	0.52	0.52
SINGOLI BHATWARI HE	67.42	0.00	-67.42	6.93	0.08	-6.85	2.21	0.18	2.03	-72.24
AZURE43_SLR	0.00	0.00	0.00	0.00	0.00	0.00	11.24	12.85	-1.62	-1.62
MRPL	0.00	0.00	0.00	0.00	0.00	0.00	4.58	5.73	-1.15	-1.15
EDEN_SLR	0.00	0.00	0.00	0.00	0.00	0.00	5.40	0.00	5.40	5.40
SBSR_SLR	0.00	0.00	0.00	0.00	0.00	0.00	5.01	6.38	-1.38	-1.38
RENEWSW_SLR	0.00	0.00	0.00	0.00	0.00	0.00	6.20	16.85	-10.65	-10.65
ADANIHB_SLR	0.00	0.00	0.00	0.00	0.00	0.00	0.00	14.91	-14.91	-14.91
RENEWJH_SLR	0.00	0.00	0.00	0.00	0.00	0.00	5.67	24.57	-18.91	-18.91
AHEJ2L_SOLAR	42.08	0.00	-42.08	9.04	0.00	-9.04	9.34	5.72	3.62	-47.49
AHEJ2L_WIND	17.03	0.00	-17.03	0.00	0.00	0.00	0.00	0.00	0.00	-17.03
AHEJ3L_SOLAR	36.54	0.00	-36.54	18.27	0.00	-18.27	13.48	5.30	8.18	-46.63
AHEJ3L_WIND	19.49	0.00	-19.49	0.00	0.00	0.00	0.00	0.00	0.00	-19.49
AHEJ4L_WIND	84.35	0.00	-84.35	0.00	0.00	0.00	0.00	0.00	0.00	-84.35
AHEJ4L_SOLAR	105.58	0.00	-105.58	26.86	0.00	-26.86	43.49	6.66	36.83	-95.61
RENEWSB	0.00	0.00	0.00	0.00	0.00	0.00	7.63	6.84	0.79	0.79
AZURE41_SLR	0.00	0.00	0.00	0.00	0.00	0.00	5.96	4.76	1.19	1.19
AYANA_RP1	0.00	0.00	0.00	0.00	0.00	0.00	6.47	3.78	2.68	2.68
AVAADASN_SLR	0.00	0.00	0.00	0.00	0.00	0.00	8.79	4.82	3.97	3.97
RENEWURJA_SLR	0.00	0.00	0.00	0.00	0.00	0.00	6.83	5.63	1.20	1.20
AVADARJHN_SLR	0.00	0.00	0.00	0.00	0.00	0.00	14.37	7.83	6.55	6.55
NCR ALLAHABAD	0.00	14.00	14.00	0.00	0.00	0.00	0.00	0.00	0.00	14.00
RENEW_SR_SLR	18.30	0.00	-18.30	6.58	0.00	-6.58	3.13	3.80	-0.67	-25.55
AZURE_MAPLE_SLR	0.00	0.00	0.00	0.00	0.00	0.00	3.26	8.11	-4.86	-4.86
THARI_SLR	26.87	0.00	-26.87	0.00	0.00	0.00	4.95	10.38	-5.43	-32.30
CLEANSR_SLR	41.22	0.00	-41.22	0.00	0.00	0.00	4.49	4.99	-0.49	-41.72
ACME_HEERGARH	47.44	0.00	-47.44	0.00	0.00	0.00	7.48	2.85	4.64	-42.81
ABC_BHDL2	53.64	0.00	-53.64	0.00	0.00	0.00	5.67	0.00	5.67	-47.98
MSUPL_BHDL2	0.00	0.00	0.00	0.00	0.00	0.00	5.97	0.00	5.97	5.97
KOLYAT_SLR	32.89	0.00	-32.89	0.00	0.00	0.00	0.00	0.00	0.00	-32.89
TATA_GREEN	36.79	0.00	-36.79	0.00	0.00	0.00	7.00	0.00	7.00	-29.79
NTPC STATIONS-WR	0.00	0.00	0.00	0.00	0.00	0.00	155.11	101.38	53.73	53.73
BHADRAVATHI HVDC	0.00	0.00	0.00	0.00	0.00	0.00	0.14	0.00	0.14	0.14
VINDHYACHAL HVDC	0.00	0.00	0.00	0.00	0.00	0.00	0.00	0.01	0.00	0.00
JINDAL POWER	102.00	0.00	-102.00	37.24	0.00	-37.24	2.95	3.59	-0.64	-139.88
LANKO_AMK	5.21	0.00	-5.21	0.00	0.00	0.00	1.37	4.06	-2.68	-7.89
NSPCL	0.00	0.00	0.00	0.00	0.00	0.00	3.41	2.09	1.32	1.32
ACBIL	0.00	0.00	0.00	0.00	0.00	0.00	3.14	0.00	3.14	3.14
BALCO	0.00	145.71	145.71	0.00	51.43	51.43	4.99	2.95	2.03	199.17
RGPPL	0.00	0.00	0.00	0.00	0.00	0.00	2.73	0.46	2.26	2.26
CGPL	0.00	0.00	0.00	19.23	0.00	-19.23	10.96	2.00	8.96	-10.27
DCPP	0.00	0.00	0.00	0.00	0.00	0.00	0.06	0.01	0.05	0.05
EMCO	4.21	0.00	-4.21	3.29	0.00	-3.29	1.97	1.22	0.75	-6.75
KSK MAHANADI	0.00	0.00	0.00	0.00	0.00	0.00	1.15	1.63	-0.48	-0.48
ESSAR POWER	67.44	0.00	-67.44	27.20	0.00	-27.20	28.17	25.74	2.431	-92.208
JINDAL STAGE-II	69.80	0.00	-69.80	60.35	0.00	-60.35	3.41	2.27	1.14	-129.01
DB POWER	0.23	0.00	-0.23	75.67	0.00	-75.67	4.10	4.15	-0.05	-75.95
DHARIWAL POWER	0.00	0.00	0.00	0.10	0.00	-0.10	1.17	0.26	0.91	0.81
JAYPEE NIGRIE	137.38	0.00	-137.38	68.72	0.00	-68.72	1.59	5.75	-4.16	-210.26
DGEN MEGA POWER	0.00	0.00	0.00	0.00	0.00	0.00	1.00	0.00	1.00	1.00
MB POWER	113.93	0.00	-113.93	44.35	0.00	-44.35	8.21	5.51	2.70	-155.59
JHABUA POWER_MP	37.52	0.00	-37.52	0.15	0.00	-0.15	6.36	2.30	4.06	-33.60
SASAN UMPP	0.00	0.00	0.00	23.72	0.00	-23.72	1.02	30.48	-29.46	-53.18
TRN ENERGY	14.88	0.00	-14.88	5.23	0.00	-5.23	1.24	0.64	0.60	-19.51
RKM POWER	35.95	0.00	-35.95	17.69	0.00	-17.69	2.46	5.23	-2.76	-56.40
SKS POWER	86.34	0.00	-86.34	16.65	0.12	-16.53	2.53	1.09	1.44	-101.42

BARC	0.00	0.00	0.00	0.00	0.00	0.00	0.00	3.24	-3.24	-3.24
KAPP 3&4	0.00	0.00	0.00	0.00	0.00	0.00	2.01	115.90	-113.89	-113.89
HVDC CHAMPA	0.00	0.00	0.00	0.00	0.00	0.00	0.02	0.11	-0.09	-0.09
MAHINDRA_RUMS	0.00	0.00	0.00	0.00	0.00	0.00	6.55	4.93	1.61	1.61
ARINSUM_RUMS	0.00	0.00	0.00	0.00	0.00	0.00	5.51	5.07	0.45	0.45
OSTRO	8.29	0.00	-8.29	8.97	0.00	-8.97	12.11	5.75	6.36	-10.89
ACME_RUMS	0.00	0.00	0.00	0.00	0.00	0.00	6.31	5.03	1.28	1.28
RENEW_BHACHAU	0.00	0.00	0.00	0.00	0.00	0.00	9.16	5.12	4.04	4.04
GIWEL_BHUJ	0.00	0.00	0.00	0.00	0.00	0.00	15.01	11.39	3.61	3.61
AGEMPL BHUJ	0.00	0.00	0.00	0.00	0.00	0.00	34.77	7.13	27.64	27.64
REGL	2.09	0.00	-2.09	0.83	0.00	-0.83	0.00	0.00	0.00	-2.92
RPREL	275.94	0.00	-275.94	87.67	0.00	-87.67	13.69	1.19	12.50	-351.11
AMPS Hazira	0.00	153.70	153.70	0.00	224.60	224.60	0.00	0.00	0.00	378.31
HVDC RAIGARH	0.00	0.00	0.00	0.00	0.00	0.00	0.04	0.11	-0.07	-0.07
ALFANAR_BHUJ	0.00	0.00	0.00	0.00	0.00	0.00	9.32	5.12	4.20	4.20
RENEW_BHUJ	0.00	0.00	0.00	0.00	0.00	0.00	8.69	6.80	1.90	1.90
ADANI_WIND	4.55	0.00	-4.55	28.52	0.00	-28.52	0.00	0.00	0.00	-33.08
TPREL_RADHANESDA	0.00	0.00	0.00	0.00	0.00	0.00	2.42	2.62	-0.21	-0.21
ESPL_RADHANESDA	0.00	0.00	0.00	0.00	0.00	0.00	3.90	5.03	-1.13	-1.13
GIPCL_RADHANESDA	0.00	0.00	0.00	0.00	0.00	0.00	2.50	2.21	0.29	0.29
GSECL_Radhanesda	0.00	0.00	0.00	0.00	0.00	0.00	0.36	1.14	-0.78	-0.78
AVIKIRAN	0.00	0.00	0.00	0.00	0.00	0.00	5.03	4.29	0.74	0.74
SESP	0.00	0.00	0.00	0.00	0.00	0.00	0.03	3.37	-3.33	-3.33
POWERICA	0.00	0.00	0.00	0.00	0.00	0.00	1.56	0.76	0.80	0.80
SKRPL	0.00	0.00	0.00	0.00	0.00	0.00	2.75	2.67	0.08	0.08
NTPC STATIONS-SR	0.00	0.00	0.00	10.69	0.00	-10.69	66.71	23.03	43.68	32.99
LANKO KONDAPALLI	0.00	0.00	0.00	0.00	0.00	0.00	0.49	0.00	0.49	0.49
SIMHAPURI	0.00	0.00	0.00	0.00	0.00	0.00	0.53	0.00	0.53	0.53
MEENAKSHI	0.00	0.00	0.00	0.00	0.00	0.00	0.48	0.00	0.48	0.48
COASTGEN	0.00	0.00	0.00	0.00	0.00	0.00	3.79	0.72	3.07	3.07
THERMAL POWERTECH	28.15	0.00	-28.15	32.49	0.00	-32.49	27.80	1.23	26.57	-34.07
IL&FS	0.00	0.00	0.00	1.70	0.00	-1.70	7.81	0.03	7.78	6.08
NLC	0.00	0.00	0.00	42.81	0.00	-42.81	31.62	22.81	8.81	-34.00
SEBFCORP	234.07	0.00	-234.07	138.29	0.00	-138.29	23.43	0.74	22.68	-349.68
NETCL VALLUR	0.00	0.00	0.00	0.00	0.00	0.00	23.70	1.87	21.83	21.83
NTPL	0.00	0.00	0.00	0.00	0.00	0.00	10.61	0.57	10.04	10.04
AHSP_ANTP	0.00	0.00	0.00	0.00	0.00	0.00	0.76	1.13	-0.37	-0.37
AKSP_ANTP	0.00	0.00	0.00	0.00	0.00	0.00	0.74	1.18	-0.44	-0.44
ABSP_ANTP	0.00	0.00	0.00	0.00	0.00	0.00	0.76	1.21	-0.45	-0.45
AZURE_ANTP	0.00	0.00	0.00	0.00	0.00	0.00	0.78	0.97	-0.19	-0.19
TATA_ANTP	0.00	0.00	0.00	0.00	0.00	0.00	1.86	1.84	0.02	0.02
FRV_ANTP	0.00	0.00	0.00	0.00	0.00	0.00	0.83	1.09	-0.26	-0.26
NTPC_ANTP	0.00	0.00	0.00	0.00	0.00	0.00	4.24	3.40	0.84	0.84
GIWEL_TCN	0.00	0.00	0.00	0.00	0.00	0.00	7.70	8.08	-0.38	-0.38
MYTRAH_TCN	0.00	0.00	0.00	0.00	0.00	0.00	5.31	7.60	-2.29	-2.29
FRV_NPK	0.00	0.00	0.00	0.00	0.00	0.00	0.87	1.18	-0.31	-0.31
ORANGE_TCN	0.00	0.00	0.00	0.00	0.00	0.00	8.29	7.07	1.22	1.22
BETAM_TCN	0.00	0.00	0.00	0.00	0.00	0.00	7.51	5.69	1.82	1.82
SBG_PVGD	0.00	0.00	0.00	0.00	0.00	0.00	4.44	4.26	0.18	0.18
SBG_NPK	0.00	0.00	0.00	0.00	0.00	0.00	5.11	5.53	-0.42	-0.42
FORTUM1_PVGD	0.00	0.00	0.00	0.00	0.00	0.00	1.49	2.17	-0.68	-0.68
PARAM_PVGD	0.00	0.00	0.00	0.00	0.00	0.00	0.63	0.77	-0.13	-0.13
YARROW_PVGD	0.00	0.00	0.00	0.00	0.00	0.00	0.24	0.24	0.00	0.00
TATA_PVGD	0.00	0.00	0.00	0.00	0.00	0.00	1.69	2.05	-0.36	-0.36
RENEW_PVGD	0.00	0.00	0.00	0.00	0.00	0.00	0.31	0.25	0.05	0.05
AKS_PVGD	0.00	0.00	0.00	0.00	0.00	0.00	0.22	0.26	-0.04	-0.04
ARS_PVGD	0.00	0.00	0.00	0.00	0.00	0.00	0.20	0.26	-0.06	-0.06
AVAADA1_PVGD	0.00	0.00	0.00	0.00	0.00	0.00	0.79	0.88	-0.09	-0.09
ADY1_PVGD	0.00	0.00	0.00	0.00	0.00	0.00	1.29	1.59	-0.31	-0.31
ADY2_PVGD	0.00	0.00	0.00	0.00	0.00	0.00	1.29	1.59	-0.31	-0.31
ADY13_PVGD	0.00	0.00	0.00	0.00	0.00	0.00	1.29	1.59	-0.31	-0.31
ADY3_PVGD	0.00	0.00	0.00	0.00	0.00	0.00	1.06	1.83	-0.77	-0.77
ADY6_PVGD	0.00	0.00	0.00	0.00	0.00	0.00	1.06	1.83	-0.77	-0.77

ADY10_PVGD	0.00	0.00	0.00	0.00	0.00	0.00	1.29	1.59	-0.31	-0.31
AZURE_PVGD	0.00	0.00	0.00	0.00	0.00	0.00	0.49	0.58	-0.09	-0.09
FORTUM2_PVGD	0.00	0.00	0.00	0.00	0.00	0.00	1.20	0.99	0.22	0.22
AVAADA2_PVGD	0.00	0.00	0.00	0.00	0.00	0.00	0.85	0.58	0.27	0.27
KREDL_PVGD	0.00	0.00	0.00	0.00	0.00	0.00	0.19	0.26	-0.07	-0.07
AYANA_NPKUNTA	0.00	0.00	0.00	0.00	0.00	0.00	0.67	1.87	-1.20	-1.20
SPRNG_NPKUNTA	0.00	0.00	0.00	0.00	0.00	0.00	0.59	1.99	-1.40	-1.40
SPRING_PUGALUR	0.00	0.00	0.00	0.00	0.00	0.00	3.02	2.48	0.54	0.54
OSTRO Hiriyur	0.00	0.00	0.00	0.00	0.00	0.00	1.59	1.53	0.06	0.06
RSTPS_FSPP	0.00	0.00	0.00	0.00	0.00	0.00	1.72	0.39	1.33	1.33
GRT_JPL	0.00	0.00	0.00	0.00	0.00	0.00	0.57	0.55	0.01	0.01
NTPC STATIONS-ER	0.00	0.00	0.00	0.00	0.00	0.00	84.46	39.03	45.43	45.43
MAITHON POWER LTD	0.00	0.00	0.00	0.00	0.00	0.00	3.26	9.02	-5.76	-5.76
NPGC	0.00	0.00	0.00	0.00	0.00	0.00	17.39	10.98	6.41	6.41
ADHUNIK POWER LTD	212.41	0.00	-212.41	18.01	0.00	-18.01	5.95	0.77	5.18	-225.24
CHUZACHEN HEP	0.00	0.00	0.00	11.28	0.00	-11.28	1.97	1.21	0.76	-10.52
RANGIT HEP	0.00	0.00	0.00	0.00	0.00	0.00	0.56	1.09	-0.52	-0.52
GMR KAMALANGA	5.16	0.00	-5.16	4.35	0.00	-4.35	6.13	0.53	5.60	-3.91
JITPL	210.49	0.00	-210.49	109.56	0.00	-109.56	5.99	5.79	0.20	-319.86
TEESTA HEP	0.00	0.00	0.00	0.00	0.00	0.00	0.02	9.31	-9.29	-9.29
DAGACHU	91.35	0.00	-91.35	0.00	0.00	0.00	23.73	0.04	23.69	-67.66
JORETHANG	75.52	0.00	-75.52	2.10	0.00	-2.10	8.27	0.00	8.27	-69.35
NEPAL(NVVN)	0.00	0.00	0.00	239.12	0.00	-239.12	13.77	12.45	1.31	-237.81
BANGLADESH	0.00	148.14	148.14	0.00	0.00	0.00	2.77	0.36	2.42	150.56
HVDC PUS	0.00	0.00	0.00	0.00	0.00	0.00	0.01	0.09	-0.08	-0.08
TEESTA STG3	616.76	0.00	-616.76	106.53	0.00	-106.53	12.44	1.12	11.32	-711.96
DIKCHU HEP	72.31	0.00	-72.31	4.48	0.00	-4.48	1.34	1.64	-0.30	-77.09
HVDC ALPD	0.00	0.00	0.00	0.00	0.00	0.00	0.07	0.07	0.00	0.00
TASHIDENG HEP	76.13	0.00	-76.13	2.30	0.00	-2.30	3.61	2.78	0.83	-77.61
BRBCL,NABINAGAR	0.00	0.00	0.00	0.00	0.00	0.00	4.87	4.24	0.63	0.63
MTPS II	0.00	0.00	0.00	0.00	0.00	0.00	4.68	3.52	1.16	1.16
TALA HEP	0.00	0.00	0.00	0.00	0.00	0.00	166.50	0.03	166.47	166.47
CHUKHA HEP	0.00	0.00	0.00	0.00	0.00	0.00	0.00	166.68	-166.68	-166.68
KURICHU HEP	0.00	0.00	0.00	0.00	0.00	0.00	0.02	27.51	-27.49	-27.49
MANGDECHU HEP	0.00	0.00	0.00	0.00	0.00	0.00	6.86	19.51	-12.65	-12.65
RONGNICHU HEP	0.00	0.00	0.00	0.00	0.00	0.00	0.96	1.08	-0.12	-0.12
NTPC STATIONS-NER	0.00	0.00	0.00	0.66	0.00	-0.66	8.72	3.00	5.72	5.06
NEEPCO STATIONS	0.00	0.00	0.00	244.82	0.00	-244.82	1.16	12.12	-10.96	-255.77
RANGANADI HEP	0.00	0.00	0.00	0.00	0.00	0.00	1.40	1.43	-0.03	-0.03
DOYANG HEP	0.00	0.00	0.00	0.00	0.00	0.00	0.20	0.37	-0.17	-0.17
ONGC PALATANA	0.00	0.00	0.00	26.50	0.00	-26.50	0.75	1.37	-0.62	-27.11
LOKTAK	0.00	0.00	0.00	0.00	0.00	0.00	0.44	0.28	0.16	0.16
PARE HEP	0.00	0.00	0.00	0.00	0.00	0.00	0.35	1.15	-0.80	-0.80

Source: NLDC

* in case of a state, the entities which are "selling" also include generators connected to state grid and the entities which are "buying" also include open access consumers.

** (-) indicates sale and (+) indicates purchase.

*** Total net includes net of transactions through bilateral, power exchange and DSM

**Table-29: VOLUME AND PRICE OF RENEWABLE ENERGY CERTIFICATES (RECs)
TRANSACTIONED THROUGH POWER EXCHANGES, AUGUST 2022**

Sr. No.	Details of REC Transactions	IEX		PXIL		HPX	
		Solar	Non-Solar	Solar	Non-Solar	Solar	Non-Solar
A	Volume of Buy Bid	432641	418260	166168	165354	-	690
B	Volume of Sell Bid	3886055	2937871	2463206	2031463	-	1550
C	Ratio of Buy Bid to Sell Bid Volume	0.11	0.14	0.07	0.08	-	0.45
D	Market Clearing Volume (MWh)	432641	418260	166168	165354	-	690
E	Weighted average Market Clearing Price (₹/MWh)	1000	1000	1000	1000	-	1000

Source: IEX, PXIL and HPX

Note 1: 1 REC = 1 MWh

**Table-30: VOLUME AND PRICE OF CROSS BORDER TRADE THROUGH DAY AHEAD
MARKET AT IEX, AUGUST 2022**

Sr. No.	Neighbouring Country	Volume (MU)			Weighted Average Price (₹/kWh)	
		Sale	Purchase	Net*	Sale	Purchase
1	Nepal	239.12	10.57	-228.56	5.18	3.82
2	Bhutan	-	-	-	-	-

Source: IEX

* Net indicates difference of volume purchased and sold by the respective neighbouring country

Note: No Cross Border transactions were recorded in DAM at PXIL and HPX